



FALKEN

TIRES



2021 DATA BOOK



OUR MISSION

TO DESIGN, BUILD, AND DELIVER EXCEPTIONAL TIRES THAT:

DEALERS

Recommend to their customers

ORIGINAL EQUIPMENT MANUFACTURERS

Select for their vehicles

CONSUMERS

Ask for by name

OUR DEALER PARTNERS

SUPPORTING THOSE WHO KNOW BEST

Falken knows that dealers are the ultimate experts when it comes to choosing the right tires, which is why we work hard to support them every step of the way. After decades of rapid growth and success in the marketplace, our dealers know that Falken's dedication to winning reaches far beyond the racetrack. By consistently developing innovative tires, providing exceptional service, and working to achieve mutual success with our customers, we aim to ensure dealers across North America know that Falken is a brand they can trust; **a brand they can win with.**

Products like the WILDPEAK A/T3W and AZENIS FK510 help drivers get the most out of their vehicles, while services like our Road Hazard Protection and 30-Day Ride Guarantees encourage dealers to sell our tires with confidence. Plus, with six strategically located distribution centers, Falken ensures dealers get the tires they need to keep their customers moving.

CONTENTS

WILDPEAK M/T	1 – 4
WILDPEAK A/T3W	5 – 8
WILDPEAK A/T TRAIL	9 – 12
WILDPEAK H/T02	13 – 16
AZENIS RT660	17 – 20
AZENIS RT615K+	21 – 24
AZENIS FK510	25 – 28
ZIEX ZE960 A/S	29 – 32
ZIEX CT60 A/S	33 – 36
ZIEX S/TZ05	37 – 40
SINCERA SN250 A/S	41 – 44
SINCERA SN201 A/S	45 – 48
WINTERPEAK F-ICE 1	49 – 52
ESPIA EPZ II	53 – 56
ESPIA EPZ II SUV	57 – 60
EUROWINTER HS449	61 – 64
ORIGINAL EQUIPMENT	65 – 66
WARRANTY INFORMATION	67 – 69
LOAD AND INFLATION CHARTS	70 – 74
SPEED SYMBOL CHART	73

FALKEN
TIRES

ORIGINAL EQUIPMENT

GAINING TRACTION. EARNING TRUST.
DELIVERING EXCELLENCE.

Significant progress in innovation and technology has earned Falken an impressive lineup of Original Equipment fitments. Today, Falken tires come OE on dozens of popular vehicles, including the Jeep® Gladiator, Porsche® Macan, and Toyota® RAV4 TRD. Acquiring OE fitments helps ensure that we're developing the high-quality products automobile manufacturers demand; the high-quality products drivers trust.

Continuing to expand our position as an original equipment supplier to key automotive manufacturers, Falken Tires is proud to have been selected by FCA US LLC to provide our WILDPEAK M/T and WILDPEAK A/T3W as tires of choice for the all-new 2020 Jeep® Gladiator Rubicon.



Audi



Jeep



MAZDA



Mercedes-Benz



MITSUBISHI
MOTORS



NISSAN



PORSCHE



RAM



SUBARU



TOYOTA



A VICTORY FOR FALKEN IS A VICTORY FOR DRIVERS EVERYWHERE

MOTORSPORTS WHERE IT ALL STARTED

From the beginning, Falken has been dedicated to proving our tires' capabilities through competition, pointing to every victory as proof that our tires can perform at the highest level. With motorsports as our laboratory, success on the track translates to innovative technology for drivers everywhere.

FORMULA DRIFT BUILDING A DYNASTY

Falken's performance in Formula Drift has been nothing short of dominant. In 2019, James Deane earned his 3rd straight Driver's Championship and led Team Falken to a 4th consecutive Tire Manufacturer's Cup. With 5 championships in 16 years, Falken drivers are leading the way in Formula Drift, and AZENIS tires are the common denominator.

OFF-ROAD WINNING IN ANY TERRAIN

Though Falken's motorsports success began on the track, we've made a habit of winning off-road as well. With a long list of victories at King of the Hammers and Lucas Oil Off-Road Racing events, our WILDPEAK tires have become synonymous with excellence in the realm of rugged terrain.

EVERY MAN CHALLENGE - KING OF THE HAMMERS

Team Falken's Dan Fresh and co-driver Mike Kim have largely outperformed the competition at the Every Man Challenge in recent years, taking 1st and 2nd in 2018 and 2019 respectively.

Our Falken Motorsports' teal and blue racing livery has become a fan favorite at every event.

WILDPEAK



AZENIS



ZIEX



WINTERPEAK



ESPIA

SINCERA

EUROWINTER



WILDPEAK M/T

MAXIMUM OFF-ROAD TRACTION BUILT FOR THE TOUGHEST TERRAIN

- Advanced Off-Road Handling
- Rugged Off-Road Protection
- Mud and Rock Defense
- Quiet Comfortable Ride



WILDPEAK A/T W

ALL-TERRAIN, ALL-WEATHER RUGGED CAPABILITY

- Deepest Tread in the Category¹
- Powerful High Torque Support
- Durable Off-Road Capability
- Rugged Sidewall Protection

¹ LT Sizes, 20/32nds inches.



WILDPEAK A/T TRAIL

RUGGED CROSSOVER CAPABILITY ENGINEERED FOR ADVENTURE

- Crossover-Specific Capability
- All-Weather Traction
- Off-Road Durability
- On-Road Dependability



WILDPEAK H/T O2

RUGGED ALL-SEASON DURABILITY BUILT FOR TODAY'S PICKUP TRUCKS

- Support for High Torque Applications
- Industry-Leading Wet Braking Performance
- Heavy Duty Towing Capability
- Rugged Sidewall Protection



AZENIS DT660

PEAK PERFORMANCE INSPIRED BY ENTHUSIASTS

- Track-Ready Handling and Stability
- Maximum Traction
- Predictable Performance
- Options for Prolonged Tread Life



AZENIS RT615K

COMPETITION-PROVEN PERFORMANCE FOR ENTHUSIASTS

- High-Speed Handling and Stability
- Extreme Performance Traction
- Superb Cornering Response
- Extended Tread Life for the Street



AZENIS FK510

SUMMER ULTRA HIGH PERFORMANCE

- Precise Handling at High Speeds
- Confidence-Inspiring Stability
- Excellent Wet Weather Traction
- Enhanced High-Speed Cornering



ZIEX ZE960 R/S

DYNAMIC ALL-SEASON HIGH PERFORMANCE

- Long Lasting Safety in the Rain
- Dynamic Handling
- Improved Snow Traction
- All-Season Performance



ZIEX CT60 R/S

PREMIUM ALL-SEASON PERFORMANCE AND SAFETY FOR CROSSOVERS

- Long Tread Life for Crossovers
- Exceptional Wet Performance
- Increased Handling for Crossovers
- All-Season Safety



ZIEX S/TZ OS

ALL-SEASON PERFORMANCE AND COMFORT FOR LUXURY SUVs AND LIGHT TRUCKS

- Long Tread Life
- Smooth Handling Year-Round
- High-Speed Stability
- Reduced Tire Noise



SINCERA SN250 A/S

LONG LASTING ALL-SEASON PERFORMANCE TOURING

- Year-Round Handling
- Longer Tread Life
- Additional Grip in Light Snow
- All-Season Drivability



SINCERA SN201 A/S

ALL-SEASON TOURING

- Smooth Ride
- All-Season Drivability
- Wet Weather Safety
- Additional Grip in Light Snow



WINTERPEAK F-ICE I

STUDDABLE SAFETY IN ANY WINTER CONDITION

- Best-in-Class Ice Braking*
- Exceptional Traction in Snow & Slush
- Superior Grip in the Cold
- Safety All Winter Long

*Based on SRI standard testing procedures.



ESPIA EP2 II SUV

CONFIDENT WINTER TRACTION

- Consistent Contact with the Road
- Confident Grip in the Rain
- Excellent Ice Traction
- Comfortable Ride



EUROWINTER H5449

DEPENDABLE WINTER PERFORMANCE

- Consistent Winter Performance
- Ice Breaking Capability
- Winter Driving Confidence
- Quiet Ride



LT | SUV

WILDPEAK M/T

MAXIMUM OFF-ROAD TRACTION BUILT FOR THE TOUGHEST TERRAIN



AVAILABLE TIRE SIZES
27 SIZES

AVAILABLE RIM SIZING
15" - 20"

SPEED RATING
Q

POPULAR FITMENTS:

- CHEVROLET SILVERADO
- FORD F-SERIES
- JEEP CHEROKEE
- JEEP WRANGLER
- NISSAN TITAN
- NISSAN XTERRA
- RAM TRUCKS
- TOYOTA FJ CRUISER
- TOYOTA TACOMA
- TOYOTA TUNDRA



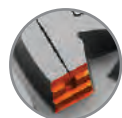
PERFORMANCE RATINGS†



†Performance ratings are based on a scale of 1 to 5 with 5 being best. Ratings are in comparison to other Falken Tires products in the same category.

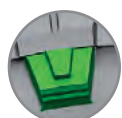
Trusted by the pros to take on the harshest conditions, the tough **WILDPEAK M/T** is built to get you there and back whether you're on the pavement, mud, snow or rocks. The M/T features Falken's proprietary three-ply DURASPEC™ Sidewall Technology developed to sustain the most punishing off-road conditions. DURASPEC™ also features two high ply turn-ups that provide an additional layer of protection and durability. An aggressive upper sidewall provides additional traction at low air pressures on rugged terrain. The WILDPEAK M/T also features exceptional road manners thanks to an optimized variable three-pitch tread pattern and precision manufacturing technology.

TIRE HIGHLIGHTS



ADVANCED OFF-ROAD HANDLING

Rugged and rigid tread blocks feature step down supports on the center blocks to provide tread-pattern rigidity in the contact patch, enhancing stability and handling while preventing stones from becoming trapped in the grooves.



RUGGED OFF-ROAD PROTECTION

Aggressive upper sidewall along with offset shoulder blocks protect the tire from sharp rocks and provide additional off-road traction at low tire pressures or in off-camber situations.



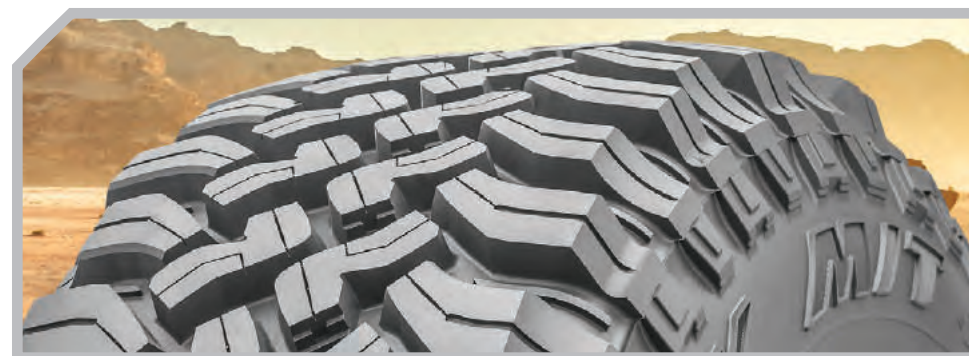
MUD AND ROCK DEFENSE

Mud and rock defense features shed mud from the tread grooves to prevent loss of traction, ensuring maximum grip while preventing rocks from puncturing the base of the tread.



QUIET COMFORTABLE RIDE

Optimized tread pattern with three variable pitches positions the tread blocks to provide an exceptionally quiet ride.



WILDPEAK M/T

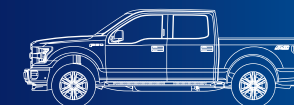
Product images are for illustrative purposes only. Tread design, technical information and tire construction subject to change without notice and may vary by size.

Wheel Dia.	Item Number	Tire Size	Load ID	Ply Rating	Service Desc.	Approved Rim Width (in)	Measuring Rim (in)	Overall Diameter (in)	Overall Width (in)	Revolutions Per Mile	Tread Depth (/32in)	Tire Weight (lbs)	Max Load Single / Dual (lbs)	Max Pressure (psi cold)
15"	28516312	30x9.50R15LT	C	6	104Q	6.5 - 8.5	7.5	29.6	9.6	713	19	46.5	1985	50
	28516322	31x10.50R15LT	C	6	109Q	7.0 - 9.0	8.5	30.7	10.5	687	19	54.0	2270	50
	28516518	33x12.50R15LT	C	6	108Q	8.5 - 11.0	10.0	32.6	13.0	650	21	75.0	2205	35
	28516920	35x12.50R15LT	C	6	113Q	8.5 - 11.0	10.0	34.5	12.9	617	21	76.7	2535	35
16"	28516994	LT235/85R16	E	10	120/116Q	6.0 - 7.5	6.5	31.8	9.2	656	18	52.7	3042 / 2778	80
	28516628	LT245/75R16	E	10	120/116Q	6.5 - 8.0	7.0	30.4	9.9	686	18	55.3	3042 / 2778	80
	28516036	LT255/85R16	E	10	123/120Q	6.5 - 8.0	7.0	33.1	10.2	643	19	59.1	3415 / 3085	80
	28516639	LT265/75R16	E	10	123/120Q	7.0 - 8.0	7.5	32.0	10.6	653	19	60.0	3415 / 3085	80
	28516611	LT285/75R16	E	10	126/123Q	7.5 - 9.0	8.0	32.7	11.5	638	20	67.7	3750 / 3415	80
	28516934	LT315/75R16	E	10	127/124Q	8.0 - 11.0	8.5	34.7	12.6	603	21	77.8	3860 / 3525	65
17"	28516616	LT235/80R17	E	10	120/117Q	6.0 - 7.5	6.5	32.0	9.2	651	18	51.6	3085 / 2835	80
	28516714	LT255/75R17	C	6	111/108Q	6.5 - 8.5	7.0	32.3	10.2	646	18	53.1	2405 / 2205	50
	28516702	LT265/70R17	E	10	121/118Q	7.0 - 8.5	8.0	31.7	10.6	659	19	56.9	3195 / 2910	80
	59000360	LT285/70R17	C	6	116/113Q	7.5 - 9.0	8.5	32.8	11.0	634	18	61.3	2755 / 2535	50
	28516612	LT285/70R17	E	10	121/118Q	7.5 - 9.0	8.5	32.9	11.4	635	20	63.3	3195 / 2910	80
	28516936	LT295/70R17	E	10	121/118Q	7.5 - 10.0	8.5	33.4	11.7	625	20	69.0	3195 / 2910	80
	28516932	LT315/70R17	E	10	121/118Q	8.0 - 11.0	9.5	34.6	12.8	604	20	80.7	3195 / 2910	65
	28516710	33x12.50R17LT	E	10	120Q	8.5 - 11.0	10.0	32.7	12.5	643	21	68.8	3085	65
	28516995	35x12.50R17LT	E	10	121Q	8.5 - 11.0	10.0	34.8	13.0	609	21	79.6	3195	65
	28516921	37x12.50R17LT	D	8	124Q	8.5 - 11.0	10.0	36.7	12.9	577	21	81.8	3525	50

Never mix tires of different size, construction or type on an axle except for temporary use as a spare tire. Always refer to vehicle owners manual for proper tire fitment.

Wheel Dia.	Item Number	Tire Size	Load ID	Ply Rating	Service Desc.	Approved Rim Width (in)	Measuring Rim (in)	Overall Diameter (in)	Overall Width (in)	Revolutions Per Mile	Tread Depth (/32in)	Tire Weight (lbs)	Max Load Single / Dual (lbs)	Max Pressure (psi cold)
18"	28516703	LT275/70R18	E	10	125/122Q	7.0 - 9.0	8.0	33.4	10.9	624	20	66.1	3640 / 3305	80
	28516827	LT285/65R18	E	10	125/122Q	8.0 - 10.0	8.5	32.8	11.6	637	19	64.6	3640 / 3305	80
	28516999	35x12.50R18LT	E	10	123Q	8.5 - 11.0	10.0	34.7	13.0	607	21	78.7	3415	65
20"	28516952	LT305/55R20	E	10	121/118Q	8.5 - 11.0	9.5	33.3	12.3	625	19	70.1	3195 / 2910	65
	28516906	33x12.50R20LT	E	10	114Q	8.5 - 11.0	10.0	32.8	12.7	638	21	70.3	2600	65
	28516905	35x12.50R20LT	E	10	121Q	8.5 - 11.0	10.0	34.7	12.6	604	21	72.5	3195	65
	28516951	37x13.50R20LT	E	10	127Q	8.5 - 11.0	11.0	36.7	13.6	573	21	87.3	3860	65

Never mix tires of different size, construction or type on an axle except for temporary use as a spare tire. Always refer to vehicle owners manual for proper tire fitment.



LT | SUV

WILDPEAK A/T3W

ALL-TERRAIN, ALL-WEATHER RUGGED CAPABILITY



AVAILABLE TIRE SIZES
70 SIZES

AVAILABLE RIM SIZING
15" - 20"

SPEED RATING
Q/R/S/T

LIMITED TREAD LIFE WARRANTY
55,000 MILES / 90,000 km

RIDE GUARANTEE
30 DAYS

POPULAR FITMENTS:

- CHEVROLET COLORADO
- CHEVROLET SILVERADO
- FORD F-SERIES
- JEEP CHEROKEE
- NISSAN FRONTIER
- NISSAN TITAN
- RAM TRUCKS
- TOYOTA 4RUNNER
- TOYOTA TACOMA
- TOYOTA TUNDRA



This tire is designed for severe snow conditions and meets the USTMA and TRAC snow traction performance requirements.

PERFORMANCE RATINGS[†]



[†]Performance ratings are based on a scale of 1 to 5 with 5 being best. Ratings are in comparison to other Falken Tires products in the same category.

TIRE HIGHLIGHTS



DEEPEST TREAD IN THE CATEGORY¹

Class-leading tread depth provides long lasting wear as well as consistent snow and hydroplane resistance throughout the life of the tire.

¹ LT Sizes, 20/32nds inches.



POWERFUL HIGH TORQUE SUPPORT

3D Canyon Sipe Technology interlocks the shoulders to resist wear from high torque as well as providing additional handling stability.



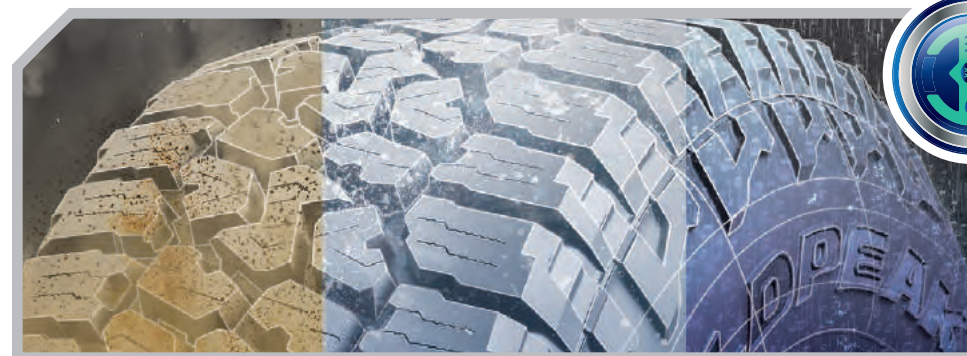
DURABLE OFF-ROAD CAPABILITY

Rugged and rigid tread blocks feature support ramps and step down features that provide tread-pattern rigidity in the contact patch, enhancing vehicle stability and handling while also preventing stones from becoming trapped in the grooves.



RUGGED SIDEWALL PROTECTION

Aggressive upper sidewall along with offset shoulder blocks protect the tire from sharp rocks and provide additional off-road traction at low tire pressures or in off-camber situations.



WEAR, WINTER & WET PERFORMANCE

- 55,000 Mile Tread Life Warranty on All Sizes
- Severe Snow Rated
- Superior Wet Weather Traction



ROAD HAZARD PROTECTION

FREE replacement for up to two years or for the first 3/32nds of tread life.*

*Restrictions apply. Tire will be replaced free of charge. Mounting and balancing not included and you may be charged applicable taxes, the cost of valve stems, and disposal fees. Available in US and Canada only.



WILDPEAK A/T3W

Product images are for illustrative purposes only. Tread design, technical information and tire construction subject to change without notice and may vary by size.

Wheel Dia.	Item Number	Tire Size	Load ID	Ply Rating	Service Desc.	Approved Rim Width (in)	Measuring Rim (in)	Overall Diameter (in)	Overall Width (in)	Revolutions Per Mile	Tread Depth (/32in)	Tire Weight (lbs)	Max Load Single / Dual (lbs)	Max Pressure (psi cold)	U.T.Q.G.
15"	28034108	235/75R15	XL	6	109T	6.0 - 8.0	6.5	28.9	9.1	732	14	35.1	2271	50	660-A-B
	28030112	30x9.50R15LT	C	6	104S	6.5 - 8.5	7.5	29.5	9.5	708	17	44.1	1985	50	-
	28030114	31x10.50R15LT	C	6	109S	7.0 - 9.0	8.5	30.5	10.4	685	18	49.8	2270	50	-
	28037115	32x11.50R15LT	C	6	113R	8.0 - 10.0	9.0	31.5	11.3	664	19	56.2	2535	50	-
	28037116	33x12.50R15LT	C	6	108R	8.5 - 11.0	10.0	32.5	12.5	645	20	57.3	2205	35	-
	28037117	35x12.50R15LT	C	6	113R	8.5 - 11.0	10.0	34.5	12.5	608	20	69.7	2535	35	-
16"	28034109	235/70R16	XL	6	109T	6.0 - 8.0	7.0	29.0	9.4	729	13	36.8	2271	50	660-A-B
	28034608	P245/75R16	XL	6	112T	6.5 - 8.0	7.0	30.5	9.8	694	13	38.6	2469	50	660-A-B
	28034657	255/70R16	XL	6	115T	6.5 - 8.5	7.5	30.1	10.2	703	13	39.7	2679	50	660-A-B
	28034667	265/70R16	SL	4	112T	7.0 - 9.0	8.0	30.6	10.8	692	14	42.3	2469	51	660-A-B
	28034301	265/75R16	SL	4	116T	7.0 - 9.0	7.5	31.7	10.6	671	14	43.9	2756	51	660-A-B
	28030119	LT225/75R16	E	10	115/112S	6.0 - 7.0	6.0	29.3	8.5	711	17	41.4	2680 / 2470	80	-
	28030994	LT235/85R16	E	10	120/116S	6.0 - 7.5	6.5	31.7	9.1	658	17	47.8	3042 / 2778	80	-
	28030628	LT245/75R16	E	10	120/116S	6.5 - 8.0	7.0	30.5	9.5	684	17	49.4	3042 / 2778	80	-
	28030639	LT265/75R16	E	10	123/120S	7.0 - 8.0	7.5	31.7	10.4	660	18	52.5	3415 / 3085	80	-
	28037611	LT285/75R16	E	10	126/123R	7.5 - 9.0	8.0	32.8	11.1	637	18	60.6	3750 / 3415	80	-
	28037641	LT305/70R16	E	10	124/121R	8.0 - 9.5	9.0	32.8	12.1	637	19	63.3	3525 / 3195	65	-
	28037124	LT315/75R16	E	10	127/124R	8.0 - 11.0	8.5	34.6	12.3	606	20	72.1	3860 / 3525	65	-
17"	28034782	215/65R17	SL	4	99T	6.0 - 7.5	6.5	28.0	8.7	756	12	32.2	1709	51	660-B-B
	28034775	225/65R17	SL	4	102T	6.0 - 8.0	6.5	28.6	9.6	741	13	33.7	1874	51	660-B-B
	59000690	235/65R17	SL	4	104H	6.5 - 8.5	7.0	29.1	9.6	721	13	31.1	1984	50	600-B-A
	28034737	235/75R17	SL	4	109T	6.0 - 8.0	6.5	31.1	9.1	679	14	37.9	2271	51	660-A-B
	28034768	245/65R17	XL	6	111T	7.0 - 8.5	7.0	29.5	9.7	719	13	39	2403	50	660-A-B
	28034747	245/70R17	XL	6	114T	6.5 - 8.0	7.0	30.6	9.8	691	13	39.9	2601	50	660-A-B
	28034764	245/75R17	SL	4	112T	6.5 - 8.0	7.0	31.5	9.8	671	13	41.4	2469	51	660-A-B
	28034713	255/65R17	XL	6	114T	7.0 - 9.0	7.5	30.1	10.3	708	13	41	2601	50	660-A-B
	28034769	255/70R17	SL	4	112T	6.5 - 8.5	7.5	31.1	10.2	679	13	42.3	2469	51	660-A-B
	28034721	265/65R17	XL	6	116T	7.5 - 9.5	8.0	30.6	10.6	697	13	42.3	2756	50	660-A-B
	28034300	265/70R17	SL	4	115T	7.0 - 9.0	8.0	31.7	10.8	668	14	46.5	2679	51	660-A-B
	28034306	P285/70R17	SL	4	117T	7.5 - 9.5	8.5	32.8	11.3	647	14	50.5	2833	51	660-A-B
	28037616	LT235/80R17	E	10	120/117R	6.0 - 7.5	6.5	31.8	9.1	655	17	48.5	3085 / 2835	80	-
	28030718	LT245/70R17	E	10	119/116S	6.5 - 8.0	7.0	30.8	9.8	676	17	48.3	3000 / 2755	80	-
	28030711	LT245/75R17	E	10	121/118S	6.5 - 7.5	7.0	31.7	9.5	657	17	51.4	3195 / 2910	80	-
	28030332	LT255/80R17	E	10	121/118S	6.5 - 8.5	7.0	33.1	10.0	632	17	52.5	3195 / 2910	80	-
	28030712	LT265/70R17	E	10	121/118S	7.0 - 8.5	8.0	31.9	10.7	653	18	52.9	3195 / 2910	80	-
	28030907	LT275/70R17	C	6	114/110S	7.0 - 8.5	8.0	32.4	11.1	644	18	57.1	2600 / 2335	50	-
	59000350	LT285/70R17	C	6	116/113Q	7.5 - 9.0	8.5	32.8	11.1	634	18	63.7	2755 / 2535	50	-
	28030612	LT285/70R17	E	10	121/118S	7.5 - 9.0	8.5	33.0	11.6	632	18	58.9	3195 / 2910	80	-
	28030129	LT285/75R17	E	10	121/118S	7.5 - 9.5	8.0	33.9	11.1	617	18	65.5	3195 / 2910	80	-
	28030123	LT315/70R17	E	10	121/118S	8.0 - 11.0	10.0	34.6	12.7	604	20	72.8	3195 / 2910	65	-
	28037113	35x12.50R17LT	E	10	121R	8.5 - 11.0	9.5	34.8	12.5	602	20	75.4	3195	65	-
	28037921	37x12.50R17LT	D	8	124R	8.5 - 11.0	10.0	36.5	12.8	574	19	82.5	3525	50	-

Never mix tires of different size, construction or type on an axle except for temporary use as a spare tire. Always refer to vehicle owners manual for proper tire fitment. // No UTQG rating for LT sizes

Wheel Dia.	Item Number	Tire Size	Load ID	Ply Rating	Service Desc.	Approved Rim Width (in)	Measuring Rim (in)	Overall Diameter (in)	Overall Width (in)	Revolutions Per Mile	Tread Depth (/32in)	Tire Weight (lbs)	Max Load Single / Dual (lbs)	Max Pressure (psi cold)	U.T.Q.G.
18"	28034841	255/70R18	SL	4	113T	6.5 - 8.5	7.5	32.1	10.2	658	13	42.8	2535	51	660-A-B
	28034854	265/60R18	XL	6	114T	7.5 - 9.5	8.0	30.6	10.5	694	13	43.2	2601	50	660-A-B
	28034823	265/65R18	SL	4	114T	7.5 - 9.5	8.0	31.5	10.6	675	13	46.1	2601	51	660-A-B
	28034809	265/70R18	SL	4	116T	7.0 - 9.0	8.0	32.6	10.8	646	14	46.7	2756	51	660-A-B
	28034901	275/65R18	SL	4	116T	7.5 - 9.5	8.0	32.1	10.9	663	14	47.4	2756	51	660-A-B
	28030127	LT265/70R18	E	10	124/121S	7.0 - 9.0	8.0	32.9	10.7	634	18	59.5	3525 / 3195	80	-
	28030803	LT275/65R18	E	10	123/120S	7.5 - 9.0	8.0	32.1	10.7	651	18	60.2	3415 / 3085	80	-
	28030703	LT275/70R18	E	10	125/122S	7.0 - 9.0	8.0	33.4	11.0	624	18	60.8	3640 / 3305	80	-
	28030827	LT285/65R18	E	10	125/122S	8.0 - 10.0	8.5	32.6	11.3	642	18	59.5	3640 / 3305	80	-
	28037333	LT285/75R18	E	10	129/126R	7.5 - 9.5	8.0	34.8	11.3	599	18	65.9	4080 / 3750	80	-
	28037327	LT295/70R18	E	10	129/126R	7.5 - 10.0	8.5	34.3	11.9	609	18	68.1	4080 / 3750	80	-
	28037335	LT305/65R18	F	12	128/125R	8.5 - 11.0	9.0	33.6	12.2	623	19	70.5	3970 / 3640	80	-
	28030126	LT325/65R18	E	10	127/124S	9.0 - 12.0	9.5	34.6	13.0	605	20	76.7	3860 / 3525	65	-
	28037334	35x12.50R18LT	F	12	128R	8.5 - 11.0	10.0	34.6	12.2	612	16	74	3970	80	-
28037330	37x12.50R18LT	E	10	128R	8.5 - 11.0	10.0	36.6	12.9	571	19	79.4	3970	65	-	
20"	28034021	275/55R20	XL	6	117T	7.5 - 9.5	8.5	31.9	11.1	661	13	48.1	2833	50	660-A-B
	28034003	275/60R20	SL	4	115T	7.5 - 9.5	8.0	33.1	10.8	640	13	47.8	2679	51	660-A-B
	28030128	LT265/60R20	E	10	121/118S	7.5 - 9.5	8.0	32.5	10.2	640	18	58.2	3195 / 2910	80	-
	28030120	LT275/65R20	E	10	126/123S	7.5 - 9.5	8.0	34.1	10.6	611	18	66.1	3750 / 3415	80	-
	28034121	LT285/55R20	E	10	122/119T	8.0 - 10.0	9.0	32.4	11.2	642	18	58.2	3305 / 3000	80	-
	28037329	LT285/60R20	E	10	125/122R	8.0 - 10.0	8.5	33.5	11.4	622	18	65.5	3640 / 3305	80	-
	28037326	LT285/65R20	E	10	127/124R	8.0 - 10.0	8.5	34.6	11.4	603	18	67.7	3860 / 3525	80	-
	28037328	LT295/60R20	E	10	126/123R	8.0 - 10.0	8.5	33.9	11.7	614	18	69.4	3750 / 3415	80	-
	28030385	LT305/55R20	F	12	125/122S	8.5 - 11.0	9.5	33.2	12.5	626	19	66.1	3640 / 3305	80	-
	28030125	LT325/60R20	E	10	126/123S	9.0 - 12.0	9.5	35.4	12.8	591	20	83.8	3750 / 3415	65	-
22"	28037307	35x12.50R20LT	F	12	125R	8.5 - 11.0	10.0	34.6	12.7	603	20	76	3640	80	-
	28037331	37x12.50R20LT	E	10	126R	8.5 - 11.0	10.0	36.5	13.0	570	19	77.8	3750	65	-
	28034219	285/45R22	XL	6	114T	9.0 - 10.5	9.5	32.1	11.1	648	12	48.1	2601	50	660-A-B

Never mix tires of different size, construction or type on an axle except for temporary use as a spare tire. Always refer to vehicle owners manual for proper tire fitment. // No UTQG rating for LT sizes



WILDPEAK A/T TRAIL

RUGGED CROSSOVER CAPABILITY ENGINEERED FOR ADVENTURE



AVAILABLE TIRE SIZES: 30 SIZES
AVAILABLE RIM SIZING: 16" - 20"
SPEED RATING: H / V

LIMITED TREAD LIFE WARRANTY: 65,000 MILES / 105,000 km
RIDE GUARANTEE: 30 DAYS

POPULAR FITMENTS:

- CHEVROLET EQUINOX
- FORD ESCAPE
- HONDA CR-V
- JEEP CHEROKEE
- JEEP RENEGADE TRAILHAWK
- MAZDA CX-5
- NISSAN ROGUE
- SUBARU CROSSTREK
- SUBARU OUTBACK
- TOYOTA RAV4



This tire is designed for severe snow conditions and meets the USTMA and TRAC snow traction performance requirements.

PERFORMANCE RATINGS[†]



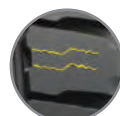
†Performance ratings are based on a scale of 1 to 5 with 5 being best. Ratings are in comparison to other Falken Tires products in the same category.

TIRE HIGHLIGHTS



CROSSOVER-SPECIFIC CAPABILITY

Crossover-specific design matches a CUV's unibody construction and higher center of gravity to provide enhanced handling year-round.



ALL-WEATHER TRACTION

3D Canyon Sipe Technology and increased tread depth provide more winter traction than a traditional all-season tire.



OFF-ROAD DURABILITY

Durable 2-ply polyester construction and rugged upper sidewall features protect the tire from sharp rocks and off-road terrain.



ON-ROAD DEPENDABILITY

An optimized tread design features Falken's silica-enriched tread compound to deliver superior wear life over a wide range of operating temperatures.



RUGGED SIDEWALL PROTECTION

When designing the A/T TRAIL, Falken engineers included aggressive sidewall features similar to those that protect the WILDPEAK A/T3W from sharp rocks and rugged terrain.

ROAD HAZARD PROTECTION

FREE replacement for up to two years or for the first 3/32nds of tread life.*

*Restrictions apply. Tire will be replaced free of charge. Mounting and balancing not included and you may be charged applicable taxes, the cost of valve stems, and disposal fees. Available in US and Canada only.



WILDPEAK A/T TRAIL

Wheel Dia.	Item Number	Tire Size	Load ID	Service Desc.	Approved Rim Width (in)	Measuring Rim (in)	Overall Diameter (in)	Overall Width (in)	Revolutions Per Mile	Tread Depth (/32in)	Tire Weight (lbs)	Max Load Single / Dual (lbs)	Max Pressure (psi cold)	U.T.O.G.
16"	28711481	205/70R16	SL	97H	5.0 - 7.0	6.0	27.3	8.2	770	10	25.8	1609	51	680-A-A
	28712681	215/65R16	XL	102H	6.0 - 7.5	6.5	27.1	8.6	783	11	28.0	1874	50	680-A-A
	28711100	215/70R16	SL	100H	5.5 - 7.0	6.5	27.8	8.8	757	10	26.9	1764	51	680-A-A
17"	28712729	215/60R17	SL	96H	6.0 - 7.5	6.5	27.2	8.8	777	11	27.8	1565	51	680-A-A
	28714782	215/65R17	SL	99H	6.0 - 7.5	6.5	28.0	8.6	756	11	28.9	1709	51	680-A-A
	28712762	225/55R17	XL	101V	6.0 - 8.0	7.0	26.8	9.2	788	11	29.8	1819	50	680-A-A
	28712728	225/60R17	SL	99H	6.0 - 8.0	6.5	27.7	9.0	764	11	29.3	1709	51	680-A-A
	28711775	225/65R17	SL	102H	6.0 - 8.0	6.5	28.6	8.9	741	11	30.0	1874	51	680-A-A
	28712725	235/55R17	XL	103V	6.5 - 8.5	7.5	27.2	9.7	777	11	32.0	1929	50	680-A-A
	28711717	235/60R17	SL	102H	6.5 - 8.5	7.0	28.1	9.6	753	11	32.6	1874	51	680-A-A
	28712790	235/65R17	XL	108H	6.5 - 8.5	7.0	29.2	9.4	729	11	35.1	2205	50	680-A-A
	28711768	245/65R17	SL	107H	7.0 - 8.5	7.0	29.5	9.8	719	11	37.9	2149	51	680-A-A
18"	28712889	225/55R18	SL	98V	6.0 - 8.0	7.0	27.6	9.2	763	11	29.8	1653	51	680-A-A
	28711826	225/60R18	SL	100H	6.0 - 8.0	6.5	28.7	9.0	737	11	30.2	1764	51	680-A-A
	28712825	235/50R18	SL	97V	6.5 - 8.5	7.5	27.3	9.6	768	11	32.4	1609	51	680-A-A
	28712817	235/55R18	SL	100V	6.5 - 8.5	7.5	28.1	9.7	750	11	33.3	1764	51	680-A-A
	28712816	235/60R18	XL	107H	6.5 - 8.5	7.0	29.3	9.4	721	11	34.2	2149	50	680-A-A
	28712815	235/65R18	SL	106H	6.5 - 8.5	7.0	30.2	9.4	702	11	36.8	2094	51	680-A-A
	28712811	245/60R18	SL	105H	7.0 - 8.5	7.0	29.7	9.8	714	11	36.4	2039	51	680-A-A
	28712845	255/55R18	XL	109V	7.0 - 9.0	8.0	28.9	10.5	730	11	37.5	2271	50	680-A-A
	28711822	255/65R18	SL	111H	7.0 - 9.0	7.5	31.1	10.2	683	11	41.2	2403	51	680-A-A

Never mix tires of different size, construction or type on an axle except for temporary use as a spare tire. Always refer to vehicle owners manual for proper tire fitment.

Wheel Dia.	Item Number	Tire Size	Load ID	Service Desc.	Approved Rim Width (in)	Measuring Rim (in)	Overall Diameter (in)	Overall Width (in)	Revolutions Per Mile	Tread Depth (/32in)	Tire Weight (lbs)	Max Load Single / Dual (lbs)	Max Pressure (psi cold)	U.T.O.G.
19"	28712955	225/55R19	SL	99V	6.0 - 8.0	7.0	28.8	9.2	730	11	33.1	1709	51	680-A-A
	28712970	235/55R19	XL	105V	6.5 - 8.5	7.5	29.1	9.8	723	11	34.6	2039	50	680-A-A
	28712814	245/55R19	SL	103V	7.0 - 8.5	7.5	29.7	9.9	709	11	35.3	1929	51	680-A-A
	28712943	255/55R19	XL	111V	7.0 - 9.0	8.0	30.0	10.5	704	11	37.5	2403	50	680-A-A
	28711813	255/60R19	SL	109H	7.0 - 9.0	7.5	31.1	10.3	680	11	39.5	2271	51	680-A-A
20"	28712026	245/50R20	SL	102V	7.0 - 8.5	7.5	29.8	9.9	704	11	37.5	1874	51	680-A-A
	28712946	255/50R20	XL	109V	7.0 - 9.0	8.0	30.1	10.4	697	11	39.9	2271	50	680-A-A
	28712950	255/55R20	XL	110V	7.0 - 9.0	8.0	31.0	10.5	680	11	40.1	2337	50	680-A-A
	28712011	265/50R20	XL	111V	7.5 - 9.5	8.5	30.6	11.0	688	11	41.4	2403	50	680-A-A

Never mix tires of different size, construction or type on an axle except for temporary use as a spare tire. Always refer to vehicle owners manual for proper tire fitment.



LT | SUV

WILDPEAK H/T02

RUGGED ALL-SEASON DURABILITY BUILT FOR TODAY'S PICKUP TRUCKS



AVAILABLE TIRE SIZES
38 SIZES

AVAILABLE RIM SIZING
15" - 22"

SPEED RATING
R / S / T / H

LIMITED TREAD LIFE WARRANTY
70,000 MILES / 115,000 km
LT SIZES **50,000 MILES / 80,000 km**

RIDE GUARANTEE
30 DAYS

POPULAR FITMENTS:

- CHEVROLET COLORADO
- CHEVROLET SILVERADO
- FORD F-SERIES
- GMC SIERRA
- NISSAN FRONTIER
- NISSAN TITAN
- NISSAN TITAN XD
- RAM TRUCKS
- TOYOTA TACOMA
- TOYOTA TUNDRA

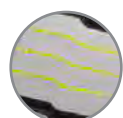


PERFORMANCE RATINGS[†]



[†]Performance ratings are based on a scale of 1 to 5 with 5 being best. Ratings are in comparison to other Falken Tires products in the same category.

TIRE HIGHLIGHTS



SUPPORT FOR HIGH TORQUE APPLICATIONS

3D Canyon Sipe Technology interlocks the shoulders to resist wear from high torque and increases edges for enhanced all-season handling.



INDUSTRY-LEADING WET BRAKING PERFORMANCE

Four wide circumferential grooves significantly enhance hydroplaning resistance by evacuating water, helping to maintain secure contact with the road even in heavy rain.



HEAVY DUTY TOWING CAPABILITY

Rigid tread blocks feature a "support bridge" that provides tread pattern rigidity in the contact patch, enhancing vehicle stability and handling when towing or hauling.



RUGGED SIDEWALL PROTECTION

Aggressive upper sidewall protects the shoulder of the tire from hazards typically encountered at construction sites or on the highway.



HEAVY DUTY SIZES FOR TOWING AND HAULING

Designed specifically to meet the demands of today's high powered trucks, HD sizes of the H/T02 deliver exceptional performance for high torque, diesel, towing and hauling applications.



ROAD HAZARD PROTECTION

FREE replacement for up to two years or for the first 3/32nds of tread life.*

*Restrictions apply. Tire will be replaced free of charge. Mounting and balancing not included and you may be charged applicable taxes, the cost of valve stems, and disposal fees. Available in US and Canada only.



WILDPEAK H/T02

WILDPEAK HIT02

RUGGED ALL-SEASON DURABILITY BUILT FOR TODAY'S PICKUP TRUCKS

Wheel Dia.	Item Number	Tire Size	Load ID	Ply Rating	Service Desc.	Approved Rim Width (in)	Measuring Rim (in)	Overall Diameter (in)	Overall Width (in)	Revolutions Per Mile	Tread Depth (/32in)	Tire Weight (lbs)	Max Load Single / Dual (lbs)	Max Pressure (psi cold)	U.T.Q.G.	Country of Mfg*	
15"	28824529	235/75R15	XL	6	109T	6.0 - 8.0	6.5	28.9	9.2	734	12	33.5	2271	50	700-A-B	USA	
	28824484	225/75R16	XL	6	108T	6.0 - 7.5	6.0	29.3	8.7	721	11	32.2	2205	50	700-A-B	USA	
	28824609	235/70R16	XL	6	109T	6.0 - 8.0	7.0	29.0	9.4	729	11	33.7	2271	50	700-A-B	USA	
	28824610	235/75R16	XL	6	112T	6.0 - 8.0	6.5	29.8	9.2	708	12	35.7	2469	50	700-A-B	USA	
	28824604	245/70R16	SL	4	107T	6.5 - 8.0	7.0	29.5	9.7	717	12	36.4	2149	51	700-A-B	USA	
	28820608	245/75R16	SL	4	111T	6.5 - 8.0	7.0	30.5	9.7	694	12	36.6	2403	51	700-A-B	USA	
	28824605	255/70R16	SL	4	111T	6.5 - 8.5	7.5	30.1	10.2	703	12	38.1	2403	51	700-A-B	USA	
16"	28824606	265/70R16	SL	4	112T	7.0 - 9.0	8.0	30.6	10.6	692	12	39.7	2469	51	700-A-B	USA	
	28824607	265/75R16	XL	6	116T	7.0 - 9.0	7.5	31.7	10.4	671	12	40.1	2756	50	700-A-B	USA	
	HD	28827464	LT215/85R16	E	10	115/112R	5.5 - 7.0	6.0	30.4	8.4	686	15	40.8	2680 / 2470	80	—	USA
		28820627	LT225/75R16	E	10	115/112S	6.0 - 7.0	6.0	29.3	8.7	711	14	39.0	2680 / 2470	80	—	USA
		28820474	LT235/85R16	E	10	120/116S	6.0 - 7.5	6.5	31.7	9.2	658	15	48.1	3042 / 2778	80	—	USA
		28820494	LT245/75R16	E	10	120/116S	6.5 - 8.0	7.0	30.5	9.7	684	15	45.0	3042 / 2778	80	—	USA
		28820505	LT265/75R16	E	10	123/120S	7.0 - 8.0	7.5	31.7	10.4	660	15	53.6	3415 / 3085	80	—	USA
28820611		LT285/75R16	E	10	126/123S	7.5 - 9.0	8.0	32.8	11.2	637	16	60.0	3750 / 3415	80	—	USA	
17"	28824768	245/65R17	SL	4	107T	7.0 - 8.5	7.0	29.5	9.7	719	12	35.1	2149	51	700-A-B	USA	
	28824617	245/70R17	SL	4	110T	6.5 - 8.0	7.0	30.6	9.7	691	12	39.2	2337	51	700-A-B	USA	
	28824713	255/65R17	SL	4	110T	7.0 - 9.0	7.5	30.1	10.2	708	12	35.9	2337	51	700-A-B	USA	
	28824769	255/70R17	SL	4	112T	6.5 - 8.5	7.5	31.1	10.2	679	12	41.7	2469	51	700-A-B	USA	
	28824721	265/65R17	SL	4	112T	7.5 - 9.5	8.0	30.6	10.6	697	12	38.6	2469	51	700-A-B	USA	
	28824701	265/70R17	SL	4	115H	7.0 - 9.0	8.0	31.7	10.6	668	12	42.3	2679	51	700-A-A	THA	
	HD	28827616	LT235/80R17	E	10	120/117R	6.0 - 7.5	6.5	31.8	9.2	655	15	47.4	3085 / 2835	80	—	USA
28827718		LT245/70R17	E	10	119/116R	6.5 - 8.0	7.0	30.6	9.7	682	15	45.6	3000 / 2755	80	—	USA	
28820711		LT245/75R17	E	10	121/118S	6.5 - 7.5	7.0	31.5	9.7	661	15	44.8	3195 / 2910	80	—	USA	
28820712		LT265/70R17	E	10	121/118S	7.0 - 8.5	8.0	31.7	10.6	659	15	50.3	3195 / 2910	80	—	USA	

No UTQG for LT sizes. * Manufactured with foreign and domestic materials.

Wheel Dia.	Item Number	Tire Size	Load ID	Ply Rating	Service Desc.	Approved Rim Width (in)	Measuring Rim (in)	Overall Diameter (in)	Overall Width (in)	Revolutions Per Mile	Tread Depth (/32in)	Tire Weight (lbs)	Max Load Single / Dual (lbs)	Max Pressure (psi cold)	U.T.Q.G.	Country of Mfg*	
18"	28821841	255/70R18	SL	4	113H	6.5 - 8.5	7.5	32.1	10.2	658	12	42.1	2535	51	700-A-A	THA	
	28821854	265/60R18	SL	4	110H	7.5 - 9.5	8.0	30.5	10.6	696	12	41.0	2337	51	700-A-A	THA	
	28821823	265/65R18	SL	4	114H	7.5 - 9.5	8.0	31.5	10.6	675	12	43.0	2601	51	700-A-A	THA	
	28824809	265/70R18	SL	4	116T	7.0 - 9.0	8.0	32.6	10.6	646	12	42.3	2756	51	700-A-B	USA	
	28821901	275/65R18	SL	4	116H	7.5 - 9.5	8.0	32.1	10.9	663	12	45.0	2756	51	700-A-A	THA	
	HD	28820127	LT265/70R18	E	10	124/121S	7.0 - 9.0	8.0	32.6	10.6	637	15	56.4	3525 / 3195	80	—	USA
		28820803	LT275/65R18	E	10	123/120S	7.5 - 9.0	8.0	32.1	10.9	651	15	56.9	3415 / 3085	80	—	USA
28820703		LT275/70R18	E	10	125/122S	7.0 - 8.5	8.0	33.2	10.9	627	16	61.1	3640 / 3305	80	—	USA	
20"	28821021	275/55R20	XL	6	117H	7.5 - 9.5	8.5	32.0	11.0	660	12	43.0	2833	50	700-A-A	USA	
	28821003	275/60R20	SL	4	115H	7.5 - 9.5	8.0	33.0	10.9	642	12	46.3	2679	51	700-A-A	THA	
HD	28820128	LT265/60R20	E	10	121/118S	7.5 - 9.5	8.0	32.5	10.7	640	15	52.2	3195 / 2910	80	—	USA	
	28820025	LT275/65R20	E	10	126/123S	7.5 - 9.5	8.0	34.1	10.9	611	15	61.7	3750 / 3415	80	—	THA	
22"	28821219	285/45R22	XL	6	114H	9.0 - 10.5	9.5	32.1	11.1	648	12	44.8	2601	50	700-A-A	JPN	

No UTQG for LT sizes. * Manufactured with foreign and domestic materials.



PCR

AZENIS RT660

PEAK PERFORMANCE INSPIRED BY ENTHUSIASTS



AVAILABLE TIRE SIZES
34 SIZES

AVAILABLE RIM SIZING
14" - 19"

SPEED RATING
H / W

POPULAR FITMENTS:

- BMW M2
- BMW M3
- FORD MUSTANG GT350R
- HONDA S2000
- HONDA CIVIC TYPE R
- MAZDA MIATA
- NISSAN 370Z
- PORSCHE 911
- SUBARU BRZ
- TOYOTA 86



PERFORMANCE RATINGS[†]

TREAD LIFE



WET GRIP



DRY GRIP



QUIET RIDE



RIDE COMFORT



FUEL EFFICIENCY



[†]Performance ratings are based on a scale of 1 to 5 with 5 being best. Ratings are in comparison to other Falken Tires products in the same category.

Inspired by enthusiasts and crafted for performance, the **AZENIS RT660** is the only choice for drivers chasing the ultimate lap time. Falken's new rigid carcass construction enhances steering response and vehicle stability, while the motorsports-inspired tread compound provides unmatched grip for those who prioritize peak performance above all else. The track-ready RT660 is DOT-approved, saving drivers the hassle of swapping tires before each track day. Designed to heighten the connection between road and driver, and available in a wider range of fitments than its predecessor, the Falken AZENIS RT660 invites more enthusiasts to experience the difference.

TIRE HIGHLIGHTS



TRACK-READY HANDLING AND STABILITY

Upgraded carcass construction provides superior handling response and vehicle stability.



MAXIMUM TRACTION

Motorsports-inspired tread compound provides unrivaled traction in all racing conditions.



PREDICTABLE PERFORMANCE

Optimized tire profile maximizes the contact patch for enhanced grip and unparalleled connection with the road.



OPTIONS FOR PROLONGED TREAD LIFE

A directional tread pattern provides rotational options to deliver even wear and extended tread life.



AZENIS RT660

Wheel Dia.	Item Number	Tire Size	Load ID	Service Desc.	Approved Rim Width (in)	Measuring Rim (in)	Overall Diameter (in)	Overall Width (in)	Revolutions Per Mile	Tread Depth (/32in)	Tire Weight (lbs)	Max Load (lbs)	Max Pressure (psi cold)	U.T.Q.G.
14"	28672764	195/60R14	SL	86H	5.5 - 7.0	6.0	23.3	7.9	908	7	18.5	1168	51	200-A-A
15"	28676821	205/50ZR15	XL	89W	5.5 - 7.5	6.5	23.1	8.4	910	7	19.6	1279	50	200-A-A
	28678301	225/45ZR15	SL	87W	7.0 - 8.5	7.5	23.0	9.0	911	7	22.3	1201	51	200-A-A
	28677068	245/40ZR15	SL	88W	8.0 - 9.5	8.5	22.8	10.0	918	7		1235	51	200-A-A
16"	28678205	205/40ZR16	XL	83W	7.0 - 8.0	7.5	22.5	8.4	922	7	19.0	1074	50	200-A-A
	28676366	215/45ZR16	SL	86W	7.0 - 8.0	7.0	23.6	8.5	881	7	22.7	1168	51	200-A-A
	28672789	225/50ZR16	SL	92W	6.0 - 8.0	7.0	24.9	9.2	846	7	24.9	1389	51	200-A-A
17"	28678248	205/40ZR17	XL	84W	7.0 - 8.0	7.5	23.5	8.4	881	7	20.7	1102	50	200-A-A
	28673480	215/40ZR17	XL	87W	7.0 - 8.5	7.5	23.8	8.7	870	7	22.5	1201	50	200-A-A
	28671586	215/45ZR17	XL	91W	7.0 - 8.0	7.0	24.6	8.5	844	7	22.9	1356	50	200-A-A
	28672371	225/45ZR17	XL	94W	7.0 - 8.5	7.5	25.0	9.0	833	7	24.5	1477	50	200-A-A
	28673380	235/40ZR17	SL	90W	8.0 - 9.5	8.5	24.4	9.6	850	7	24.0	1323	51	200-A-A
	28674842	235/45ZR17	SL	94W	7.5 - 9.0	8.0	25.4	9.4	821	7	25.1	1477	51	200-A-A
	28672641	245/40ZR17	XL	95W	8.0 - 9.5	8.5	24.8	10.0	840	7	26.7	1521	50	200-A-A
	28673263	245/45ZR17	XL	99W	7.5 - 9.0	8.0	25.7	9.7	812	7	26.7	1709	50	200-A-A
	28678267	255/40ZR17	XL	98W	8.5 - 10.0	9.0	25.1	10.4	830	7	26.9	1653	50	200-A-A
28673052	275/40ZR17	SL	98W	9.0 - 11.0	9.5	25.7	11.1	812	7	28.9	1653	51	200-A-A	

Wheel Dia.	Item Number	Tire Size	Load ID	Service Desc.	Approved Rim Width (in)	Measuring Rim (in)	Overall Diameter (in)	Overall Width (in)	Revolutions Per Mile	Tread Depth (/32in)	Tire Weight (lbs)	Max Load (lbs)	Max Pressure (psi cold)	U.T.Q.G.
18"	28673663	225/40ZR18	XL	92W	7.5 - 9.0	8.0	25.1	9.2	827	7	24.3	1389	50	200-A-A
	28677086	235/40ZR18	XL	95W	8.0 - 9.5	8.5	25.4	9.6	817	7	25.8	1521	50	200-A-A
	28677350	245/40ZR18	XL	97W	8.0 - 9.5	8.5	25.8	10.0	806	7	27.3	1609	50	200-A-A
	28671604	255/35ZR18	XL	94W	8.5 - 10.0	9.0	25.0	10.4	830	7	26.9	1477	50	200-A-A
	28671440	255/40ZR18	XL	99W	8.5 - 10.0	9.0	26.1	10.4	799	7	28.0	1709	50	200-A-A
	28677149	265/35ZR18	XL	97W	9.0 - 10.5	9.5	25.4	10.9	820	7	28.2	1609	50	200-A-A
	28678776	275/35ZR18	SL	95W	9.0 - 11.0	9.5	25.6	11.2	811	7	28.4	1521	51	200-A-A
	28677420	285/30ZR18	SL	93W	9.5 - 10.5	10.0	24.8	11.6	837	7	28.2	1433	51	200-A-A
	28674596	295/40ZR18	SL	103W	10.0 - 11.5	10.5	27.4	12.0	763	7	35.5	1929	51	200-A-A
	28673231	315/30ZR18	SL	98W	10.5 - 11.5	11.0	25.5	12.8	815	7	32.2	1653	51	200-A-A
19"	28675855	245/35ZR19	XL	93W	8.0 - 9.5	8.5	25.8	10.0	802	7	26.7	1433	50	200-A-A
	28673508	265/35ZR19	XL	98W	9.0 - 10.5	9.5	26.4	10.9	788	7	29.1	1653	50	200-A-A
	28675533	275/30ZR19	XL	96W	9.0 - 10.0	9.5	25.6	11.1	808	7	28.7	1565	50	200-A-A
	28678280	275/35ZR19	XL	100W	9.0 - 11.0	9.5	26.6	11.2	779	7	30.0	1764	50	200-A-A
	28678336	295/35ZR19	SL	100W	10.0 - 11.5	10.5	27.2	12.0	765	7	32.6	1764	51	200-A-A
	28676628	305/30ZR19	XL	102W	10.5 - 11.5	11.0	26.3	12.5	791	7	31.3	1874	50	200-A-A
	28679574	315/30ZR19	SL	100W	10.5 - 11.5	11.0	26.5	12.8	782	7	32.8	1764	51	200-A-A



PCR

AZENIS RT615K+

COMPETITION-PROVEN PERFORMANCE FOR ENTHUSIASTS



AVAILABLE TIRE SIZES
21 SIZES

AVAILABLE RIM SIZING
14" - 18"

SPEED RATING
H / W

POPULAR FITMENTS:

- ACURA INTEGRA
- AUDI TT QUATTRO
- BMW M3
- BMW Z4
- HONDA S2000
- MAZDA MIATA
- NISSAN 370Z
- PORSCHE 911
- SCION FR-S
- SUBARU BRZ



PERFORMANCE RATINGS[†]

TREAD LIFE



WET GRIP



DRY GRIP



QUIET RIDE



RIDE COMFORT



FUEL EFFICIENCY



[†]Performance ratings are based on a scale of 1 to 5 with 5 being best. Ratings are in comparison to other Falken Tires products in the same category.

TIRE HIGHLIGHTS



HIGH-SPEED HANDLING AND STABILITY

High-tension carcass increases handling response and high-speed stability.



EXTREME PERFORMANCE TRACTION

Race-inspired tread compound provides excellent traction from the track to the street.



SUPERB CORNERING RESPONSE

Massive sport side shoulder blocks deliver motorsports-level grip and exceptional cornering response.



EXTENDED TREAD LIFE FOR THE STREET

An asymmetric tread design and digitally-engineered compound provide track-capable performance that lasts on the street.



Developed for maximum performance-minded drivers, the **AZENIS RT615K+** is derived from the original competition-winning RT615K. The PLUS encompasses a digitally-engineered, nanotech-formulated compound enhancement for superior grip and excellent handling. On the track, the RT615K+'s confidence-inspiring straight line and cornering traits encourage drivers to push their vehicles to the limits in safe, closed-course environments. On the street, high-tension carcass construction provides added durability, ensuring this DOT-approved tire is capable of road-legal daily use. Built for performance compacts, sports coupes, sports sedans and muscle cars, the AZENIS RT615K+ is the enthusiast's choice for competition-proven performance, from the track to the street.

AZENIS RT615K+

Wheel Dia.	Item Number	Tire Size	Load ID	Service Desc.	Approved Rim Width (in)	Measuring Rim (in)	Overall Diameter (in)	Overall Width (in)	Revolutions Per Mile	Tread Depth (/32in)	Tire Weight (lbs)	Max Load (lbs)	Max Pressure (psi cold)	U.T.Q.G.
14"	28533443	195/60R14	SL	86H	5.5 - 7.0	6.0	23.2	7.9	900	8	19	1168	51	200-A-A
	28533077	205/50R15	XL	89W	5.5 - 7.5	6.5	23.2	8.2	895	8	21	1279	50	200-A-A
16"	28534903	205/40R16	XL	83W	7.0 - 8.0	7.5	22.5	8.5	911	8	18	1074	50	200-A-A
	28533766	215/45R16	SL	86W	7.0 - 8.0	7.0	23.6	8.7	768	8	22	1168	51	200-A-A
	28538495	225/50R16	SL	92W	6.0 - 8.0	7.0	24.9	9.1	881	8	25	1389	51	200-A-A
17"	28537988	205/40R17	XL	84W	7.0 - 8.0	7.5	23.4	8.5	875	8	19	1102	50	200-A-A
	28532497	215/40R17	XL	87W	7.0 - 8.5	7.5	23.9	8.7	861	8	20	1202	50	200-A-A
	28531437	215/45R17	SL	87W	7.0 - 8.0	7.0	24.6	8.3	871	8	23	1201	51	200-A-A
	28537258	225/45R17	XL	94W	7.0 - 8.5	7.5	25.0	8.9	822	8	25	1477	50	200-A-A
	28534447	235/40R17	SL	90W	8.0 - 9.5	8.5	24.4	9.4	836	8	24	1323	51	200-A-A
	28534124	245/45R17	XL	99W	7.5 - 9.0	8.0	25.6	9.6	806	8	27	1709	50	200-A-A
	28538003	255/40R17	SL	94W	8.5 - 10.0	9.0	25.0	10.3	825	8	27	1477	51	200-A-A
	28535983	275/40R17	SL	98W	9.0 - 11.0	9.5	25.6	10.8	806	8	28	1653	51	200-A-A

Wheel Dia.	Item Number	Tire Size	Load ID	Service Desc.	Approved Rim Width (in)	Measuring Rim (in)	Overall Diameter (in)	Overall Width (in)	Revolutions Per Mile	Tread Depth (/32in)	Tire Weight (lbs)	Max Load (lbs)	Max Pressure (psi cold)	U.T.Q.G.
18"	28539564	225/40R18	XL	92W	7.5 - 9.0	8.0	25.1	9.3	818	8	24	1389	50	200-A-A
	28537681	235/40R18	XL	95W	8.0 - 9.5	8.5	25.5	9.6	806	8	24	1521	50	200-A-A
	28533881	245/40R18	XL	97W	8.0 - 9.5	8.5	25.6	9.8	803	8	27	1609	50	200-A-A
	28532104	255/40R18	SL	95W	8.5 - 10.0	9.0	25.9	10.3	794	8	28	1521	51	200-A-A
	28538247	265/35R18	XL	97W	9.0 - 10.5	9.5	25.4	10.7	852	8	28	1609	50	200-A-A
	28537737	275/35R18	SL	95W	9.0 - 11.0	9.5	25.6	10.8	803	8	27	1521	51	200-A-A
	28535059	295/40R18	SL	103W	10.0 - 11.5	10.5	27.2	11.8	763	8	33	1929	51	200-A-A
	28533615	315/30R18	SL	98W	10.5 - 11.5	11.0	25.5	12.6	813	8	32	1653	51	200-A-A



PCR

SUV | CUV

AZENIS FK510

SUMMER ULTRA HIGH PERFORMANCE



AVAILABLE TIRE SIZES
81 SIZES

AVAILABLE RIM SIZING
17" - 22"

SPEED RATING
W / Y / (Y)

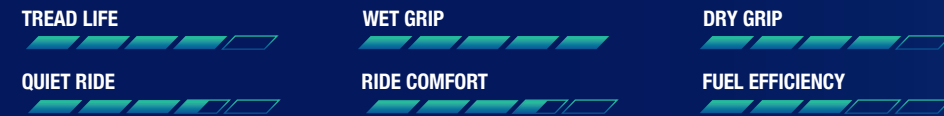
POPULAR FITMENTS:

- AUDI S4
- BMW M3
- BMW X5
- CHEVROLET CAMARO
- DODGE CHARGER
- FORD MUSTANG
- HONDA S2000
- MAZDA RX-8
- PORSCHE MACAN
- SUBARU BRZ

RIDE GUARANTEE
30 DAYS

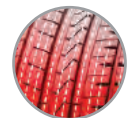


PERFORMANCE RATINGS[†]



[†]Performance ratings are based on a scale of 1 to 5 with 5 being best. Ratings are in comparison to other Falken Tires products in the same category.

TIRE HIGHLIGHTS



PRECISE HANDLING AT HIGH SPEEDS

Hybrid undertread cap ply provides added rigidity and high-speed stability through the use of both aramid and nylon materials.



CONFIDENCE-INSPIRING STABILITY

Optimized void ratio and variable sipe depth allow for controlled flexibility while maintaining overall block rigidity, improving both directional stability and vehicle-stopping distances.



EXCELLENT WET WEATHER TRACTION

Advanced 4D Nano Design allows the compound to adapt to dry and wet driving conditions, while four circumferential grooves effectively disperse water to resist hydroplaning.



ENHANCED HIGH-SPEED CORNERING

Wide shoulder blocks enhance high-speed cornering and lateral grip.



SUV/CUV SIZES AVAILABLE

The FK510 SUV is designed to offer today's highly-capable luxury sport SUVs and CUVs the performance they demand.

ROAD HAZARD PROTECTION

FREE replacement for up to two years or for the first 3/32nds of tread life.*

*Restrictions apply. Tire will be replaced free of charge. Mounting and balancing not included and you may be charged applicable taxes, the cost of valve stems, and disposal fees. Available in US and Canada only.



AZENIS FK510



PCR

ZIEX ZE960 A/S

DYNAMIC ALL-SEASON HIGH PERFORMANCE



AVAILABLE TIRE SIZES
53 SIZES

AVAILABLE RIM SIZING
15" - 20"

SPEED RATING
H / V / W

LIMITED TREAD LIFE WARRANTY
65,000 MILES (H/V) / 105,000 km (H/V)

RIDE GUARANTEE
30 DAYS

45,000 MILES (W) / 70,000 km (W)

POPULAR FITMENTS:

ACURA TLX
BMW 3/4 - SERIES
DODGE CHALLENGER
DODGE CHARGER
HONDA ACCORD SPORT
INFINITI Q50
LEXUS IS
MERCEDES BENZ C-CLASS
TESLA MODEL 3
TOYOTA CAMRY



PERFORMANCE RATINGS[†]



[†]Performance ratings are based on a scale of 1 to 5 with 5 being best. Ratings are in comparison to other Falken Tires products in the same category.

TIRE HIGHLIGHTS



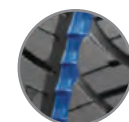
LONG LASTING SAFETY IN THE RAIN

As the tire wears, Flask Siping continues to evacuate water, improving wet braking performance and hydroplaning resistance throughout the life of the tire.



DYNAMIC HANDLING

Optimized tread pattern rigidity coupled with a robust construction enhances the dynamic capability for high performance applications.



IMPROVED SNOW TRACTION

Canyon Groove Technology enhances braking performance in the snow, and remains tucked away to preserve a comfortable and quiet ride.



ALL-SEASON PERFORMANCE

Falken's exclusive silica tread compound allows the rubber to remain pliable at low temperatures, increasing grip in wet, snow and icy conditions. During dry conditions, as the rubber heats up, chemical bonds remain strong to deliver superb warm weather performance.



LONG-LASTING WET PERFORMANCE

Falken's Flask Sipes continue to evacuate water as the tire wears to provide long-lasting safety and confidence in the wet.



ROAD HAZARD PROTECTION

FREE replacement for up to two years or for the first 3/32nds of tread life.*

*Restrictions apply. Tire will be replaced free of charge. Mounting and balancing not included and you may be charged applicable taxes, the cost of valve stems, and disposal fees. Available in US and Canada only.



ZIEX ZE960 A/S

Wheel Dia.	Item Number	Tire Size	Load ID	Service Desc.	Approved Rim Width (in)	Measuring Rim (in)	Overall Diameter (in)	Overall Width (in)	Revolutions Per Mile	Tread Depth (/32in)	Tire Weight (lbs)	Max Load (lbs)	Max Pressure (psi cold)	U.T.O.G.	
15"	28962571	195/50R15	SL	82V	5.5 - 7.0	6.0	22.7	7.9	921	11	17.6	1047	51	640-A-A	
	28961543	195/65R15	SL	91H	5.5 - 7.0	6.0	25.1	8.0	845	11	19.8	1356	51	640-A-A	
	28962544	205/65R15	XL	99V	5.5 - 7.5	6.0	25.6	8.3	832	11	21.8	1709	50	640-A-A	
16"	28962660	195/50R16	SL	84V	5.5 - 7.0	6.0	23.7	7.9	883	11	19.4	1102	51	640-A-A	
	28962615	195/55R16	SL	87V	5.5 - 7.0	6.0	24.4	7.9	862	11	20.3	1201	51	640-A-A	
	28962690	205/45R16	XL	87V	6.5 - 7.5	7.0	23.3	8.1	895	11	19.2	1201	50	640-A-A	
	28962671	205/50R16	SL	87V	5.5 - 7.5	6.5	24.1	8.4	874	11	20.5	1201	51	640-A-A	
	28962483	205/55R16	SL	91V	5.5 - 7.5	6.5	24.9	8.4	845	11	21.4	1356	51	640-A-A	
	28962652	205/60R16	SL	92V	5.5 - 7.5	6.0	25.8	8.3	821	11	21.8	1389	51	640-A-A	
	28962626	205/65R16	SL	95V	5.5 - 7.5	6.0	26.5	8.3	800	11	22.0	1521	51	640-A-A	
	28962662	215/55R16	XL	97V	6.0 - 7.5	7.0	25.3	8.9	834	11	23.6	1609	50	640-A-A	
	28962479	215/60R16	SL	95V	6.0 - 7.5	6.5	26.3	8.8	811	11	22.9	1521	51	640-A-A	
	28962670	225/55R16	SL	95V	6.0 - 8.0	7.0	25.7	9.2	821	11	24.0	1521	51	640-A-A	
	28962480	225/60R16	SL	98V	6.0 - 8.0	6.5	26.7	9.1	795	11	25.1	1653	51	640-A-A	
	28963674	245/50R16	SL	97W	7.0 - 8.5	7.5	25.7	10.0	821	10	25.1	1609	51	540-A-A	
	17"	28963740	205/40R17	XL	84W	7.0 - 8.0	7.5	23.5	8.3	886	10	20.3	1102	50	540-A-A
		28963781	205/45R17	XL	88W	6.5 - 7.5	7.0	24.3	8.1	856	10	20.9	1235	50	540-A-A
28962770		205/50R17	XL	93V	5.5 - 7.5	6.5	25.1	8.4	837	11	21.4	1433	50	640-A-A	
28962792		215/45R17	XL	91V	7.0 - 8.0	7.0	24.7	8.4	842	11	22.0	1356	50	640-A-A	
28962771		215/50R17	SL	91V	6.0 - 7.5	7.0	25.5	8.9	823	11	21.8	1356	51	640-A-A	
28962727		215/55R17	SL	94V	6.0 - 7.5	7.0	26.3	8.9	800	11	22.7	1477	51	640-A-A	
28962782		215/65R17	SL	99V	6.0 - 7.5	6.5	28.1	8.8	755	11	26.7	1709	51	640-A-A	
28963795		225/45R17	XL	94W	7.0 - 8.5	7.5	25.0	8.9	834	10	24.0	1477	50	540-A-A	
28962772		225/50R17	SL	94V	6.0 - 8.0	7.0	25.9	9.2	811	11	23.6	1477	51	640-A-A	
28962762		225/55R17	XL	101V	6.0 - 8.0	7.0	26.8	9.2	788	11	26.5	1819	50	640-A-A	
28962794		235/45R17	XL	97V	7.5 - 9.0	8.0	25.4	9.3	821	11	25.4	1609	50	640-A-A	
28962773		235/50R17	SL	96V	6.5 - 8.5	7.5	26.3	9.6	800	11	24.9	1565	51	640-A-A	
28963725		235/55R17	SL	99W	6.5 - 8.5	7.5	27.2	9.6	778	10	27.6	1709	51	540-A-A	
28963785		245/40R17	XL	95W	8.0 - 9.5	8.5	24.7	9.8	840	10	26.7	1521	50	540-A-A	
28963784		245/45R17	XL	99W	7.5 - 9.0	8.0	25.7	9.6	813	10	26.0	1709	50	540-A-A	
28963776		245/50R17	SL	99W	7.0 - 8.5	7.5	26.7	10.0	788	10	27.8	1709	51	540-A-A	

Wheel Dia.	Item Number	Tire Size	Load ID	Service Desc.	Approved Rim Width (in)	Measuring Rim (in)	Overall Diameter (in)	Overall Width (in)	Revolutions Per Mile	Tread Depth (/32in)	Tire Weight (lbs)	Max Load (lbs)	Max Pressure (psi cold)	U.T.O.G.
18"	28963891	215/40R18	XL	89W	7.0 - 8.5	7.5	24.8	8.6	837	10	22.7	1279	50	540-A-A
	28963899	215/45R18	XL	93W	7.0 - 8.0	7.0	25.7	8.4	808	10	23.4	1433	50	540-A-A
	28963892	225/40R18	XL	92W	7.5 - 9.0	8.0	25.1	9.1	826	10	23.8	1389	50	540-A-A
	28963824	225/45R18	XL	95W	7.0 - 8.5	7.5	26.0	8.9	800	10	24.9	1521	50	540-A-A
	28963805	225/50R18	SL	95W	6.0 - 8.0	7.0	26.9	9.2	778	10	24.7	1521	51	540-A-A
	28963893	235/40R18	XL	95W	8.0 - 9.5	8.5	25.4	9.5	818	10	26.2	1521	50	540-A-A
	28963895	235/45R18	SL	94W	7.5 - 9.0	8.0	26.4	9.3	788	10	26.5	1477	51	540-A-A
	28963825	235/50R18	XL	101W	6.5 - 8.5	7.5	27.3	9.6	769	10	26.7	1819	50	540-A-A
	28962817	235/55R18	XL	104V	6.5 - 8.5	7.5	28.1	9.6	749	11	30.2	1984	50	640-A-A
	28963894	245/40R18	XL	97W	8.0 - 9.5	8.5	25.7	9.8	805	10	27.6	1609	50	540-A-A
	28962865	245/45R18	XL	100V	7.5 - 9.0	8.0	26.7	9.6	781	11	27.8	1764	50	640-A-A
	28963863	245/55R18	SL	103W	7.0 - 8.5	7.5	28.6	10.0	736	10	30.2	1929	51	540-A-A
	28963844	255/40R18	XL	99W	8.5 - 10.0	9.0	26.0	10.2	798	10	28.4	1709	50	540-A-A
	28963866	255/45R18	XL	103W	8.0 - 9.5	8.5	27.1	10.0	771	10	27.3	1929	50	540-A-A
19"	28963937	225/45R19	XL	96W	7.0 - 8.5	7.5	27.0	8.9	769	11	25.6	1565	50	540-A-A
	28962495	235/40R19	XL	96V	8.0 - 9.5	8.5	26.4	9.5	786	11	26.2	1565	50	640-A-A
	28963974	245/40R19	SL	94W	8.0 - 9.5	8.5	26.7	9.8	774	10	28.0	1477	51	540-A-A
	28962997	255/45R19	SL	100V	8.0 - 9.5	8.5	28.1	10.0	742	11	29.5	1764	51	640-A-A
20"	28963985	245/35R20	XL	95W	8.0 - 9.5	8.5	26.8	9.8	774	10	28.0	1521	50	540-A-A
	28963002	245/40R20	XL	99W	8.0 - 9.5	8.5	27.7	9.8	747	10	29.8	1709	50	540-A-A
	28963023	245/45R20	XL	103W	7.5 - 9.0	8.0	28.7	9.6	725	10	29.8	1929	50	540-A-A
	28963001	255/35R20	XL	97W	8.5 - 10.0	9.0	27.0	10.2	767	10	28.0	1609	50	540-A-A



ZIEX CT60 A/S

PREMIUM ALL-SEASON PERFORMANCE AND SAFETY FOR CROSSOVERS



AVAILABLE TIRE SIZES
40 SIZES

AVAILABLE RIM SIZING
16" - 20"

SPEED RATING
H / V

LIMITED TREAD LIFE WARRANTY
65,000 MILES / 105,000 km

RIDE GUARANTEE
30 DAYS

POPULAR FITMENTS:

- CHEVROLET TRAVERSE
- FORD EDGE
- FORD ESCAPE
- GMC TERRAIN
- HONDA CR-V
- KIA SORENTO
- LEXUS RX
- NISSAN ROGUE
- SUBARU FORESTER
- TOYOTA RAV4



PERFORMANCE RATINGS[†]



[†]Performance ratings are based on a scale of 1 to 5 with 5 being best. Ratings are in comparison to other Falken Tires products in the same category.

TIRE HIGHLIGHTS



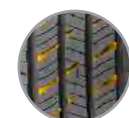
LONG TREAD LIFE FOR CROSSOVERS

3D Canyon Sipes interlock the shoulder blocks to resist wear commonly associated with crossovers due to their higher center of gravity.



EXCEPTIONAL WET PERFORMANCE

Four wide circumferential grooves resist hydroplaning by quickly evacuating water through the tread pattern providing secure contact with the road in heavy rain.



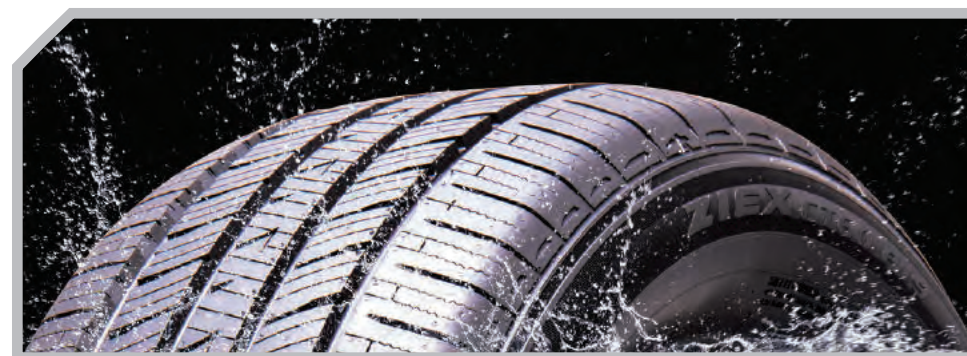
INCREASED HANDLING FOR CROSSOVERS

Asymmetric tread pattern consisting of polygonal-shaped inside grooves that provide more edges to increase wet and snow traction, is combined with a high-rigidity outside shoulder rib that delivers the handling and stability necessary for CUVs.



ALL-SEASON SAFETY

Silica enriched tread compound delivers superior wear life and wet performance over a wide range of operating temperatures.



TIER ONE WET BRAKING PERFORMANCE

The ZIEX CT60 stops up to 21 feet shorter against leading competitors in a recent 60-0mph wet braking performance comparison test.

Performance results are based on SRUSA standard testing procedures conducted Q3 2017. Individual results may vary depending on vehicle type, tire maintenance, driving style and road conditions.



ROAD HAZARD PROTECTION

FREE replacement for up to two years or for the first 3/32nds of tread life.*



*Restrictions apply. Tire will be replaced free of charge. Mounting and balancing not included and you may be charged applicable taxes, the cost of valve stems, and disposal fees. Available in US and Canada only.

ZIEX CT60 A/S

Product images are for illustrative purposes only. Tread design, technical information and tire construction subject to change without notice and may vary by size.

Wheel Dia.	Item Number	Tire Size	Load ID	Service Desc.	Approved Rim Width (in)	Measuring Rim (in)	Overall Diameter (in)	Overall Width (in)	Revolutions Per Mile	Tread Depth (/32in)	Tire Weight (lbs)	Max Load (lbs)	Max Pressure (psi cold)	U.T.Q.G.
16"	28041481	205/70R16	SL	97H	5.0 - 7.0	6.0	27.3	8.2	770	10	25.1	1609	51	740-A-A
	28042275	215/65R16	XL	102V	6.0 - 7.5	6.5	27.0	8.6	786	10	25.6	1874	50	680-A-A
	28043229	215/70R16	SL	100H	5.5 - 7.0	6.5	27.9	8.6	756	10	26.1	1764	51	740-A-A
	28047319	225/70R16	SL	103H	6.0 - 7.5	6.5	28.4	8.9	741	10	28.0	1929	51	740-A-A
	28045157	235/70R16	SL	106H	6.0 - 8.0	7.0	29.0	9.4	729	11	28.7	2094	51	740-A-A
17"	28047536	215/60R17	XL	100V	6.0 - 7.5	6.5	27.2	8.6	777	10	25.6	1764	50	680-A-A
	28049959	225/60R17	SL	99V	6.0 - 8.0	6.5	27.6	8.9	764	10	27.8	1709	51	740-A-A
	28046926	225/65R17	SL	102H	6.0 - 8.0	6.5	28.6	8.9	741	10	28.0	1874	51	740-A-A
	28042725	235/55R17	SL	99V	6.5 - 8.5	7.5	27.0	9.8	744	11	28.9	1709	51	740-A-A
	28048361	235/60R17	SL	102H	6.5 - 8.5	7.0	28.1	9.4	753	10	30.0	1874	51	740-A-A
	28044862	235/65R17	SL	104V	6.5 - 8.5	7.0	29.1	9.4	731	10	30.4	1984	51	740-A-A
18"	28042900	215/55R18	SL	95V	6.0 - 7.5	7.0	27.2	9.0	742	10	25.6	1521	51	740-A-A
	28047926	225/55R18	SL	98V	6.0 - 8.0	7.0	27.8	9.1	758	10	27.1	1653	51	740-A-A
	28041826	225/60R18	SL	100H	6.0 - 8.0	6.5	28.6	9.0	738	10	28.7	1764	51	740-A-A
	28042903	235/50R18	SL	97V	6.5 - 8.5	7.5	27.3	9.6	771	10	28.4	1609	51	740-A-A
	28046809	235/55R18	SL	100V	6.5 - 8.5	7.5	28.1	9.6	748	10	28.9	1764	51	740-A-A
	28043236	235/60R18	XL	107V	6.5 - 8.5	7.0	29.1	9.4	726	10	30.9	2149	50	680-A-A
	28044742	235/65R18	SL	106V	6.5 - 8.5	7.0	30.0	9.4	705	10	32.4	2094	51	740-A-A
	28042820	245/50R18	SL	100V	7.0 - 8.5	7.5	27.7	10.0	728	11	30.6	1764	51	740-A-A
	28041117	245/60R18	SL	105V	7.0 - 8.5	7.0	29.6	9.7	716	10	35.1	2039	51	740-A-A
	28046594	255/55R18	XL	109V	7.0 - 9.0	8.0	29.0	10.4	728	11	33.7	2271	50	680-A-A
	28041812	255/60R18	SL	108H	7.0 - 9.0	7.5	30.0	10.2	705	11	34.2	2205	51	740-A-A
	28041376	255/65R18	SL	111H	7.0 - 9.0	7.5	31.1	10.2	683	11	36.8	2403	51	740-A-A

Wheel Dia.	Item Number	Tire Size	Load ID	Service Desc.	Approved Rim Width (in)	Measuring Rim (in)	Overall Diameter (in)	Overall Width (in)	Revolutions Per Mile	Tread Depth (/32in)	Tire Weight (lbs)	Max Load (lbs)	Max Pressure (psi cold)	U.T.Q.G.
19"	28043062	225/55R19	SL	99V	6.0 - 8.0	7.0	28.8	9.1	730	10	28.4	1709	51	740-A-A
	28046456	235/45R19	XL	99V	7.5 - 9.0	8.0	27.4	9.2	760	10	27.0	1709	50	680-A-A
	28045081	235/50R19	SL	99V	6.5 - 8.5	7.5	28.3	9.6	742	10	30.2	1709	51	740-A-A
	28044420	235/55R19	XL	105V	6.5 - 8.5	7.5	29.2	9.6	720	10	30.6	2039	50	680-A-A
	28042904	245/45R19	XL	102V	7.5 - 9.0	8.0	27.6	9.6	730	11	28.9	1874	50	680-A-A
	28047020	245/55R19	SL	103V	7.0 - 8.5	7.5	29.6	9.9	711	10	31.5	1929	51	740-A-A
	28042996	255/40R19	XL	100V	8.5 - 10.0	9.0	27.1	10.2	794	11	28.2	1764	50	680-A-A
	28045479	255/50R19	XL	107V	7.0 - 9.0	8.0	29.1	10.4	723	11	34.2	2149	50	680-A-A
	28047317	255/55R19	XL	111V	7.0 - 9.0	8.0	30.0	10.6	672	11	34.4	2403	50	680-A-A
	28045772	255/60R19	SL	109H	7.0 - 9.0	7.5	31.1	10.2	680	11	34.2	2271	51	740-A-A
20"	28047541	265/50R19	XL	110V	7.5 - 9.5	8.5	29.5	10.8	713	11	34.6	2337	50	680-A-A
	28048062	235/55R20	SL	102V	6.5 - 8.5	7.5	30.2	9.6	697	10	34.6	1874	51	740-A-A
	28048659	245/50R20	SL	102V	7.0 - 8.5	7.5	29.7	9.9	708	10	34.4	1874	51	740-A-A
	28042013	255/45R20	XL	105V	8.0 - 9.5	8.5	29.1	10.0	735	11	32.6	2039	50	680-A-A
	28043623	255/50R20	XL	109V	7.0 - 9.0	8.0	30.1	10.4	699	11	37.7	2271	50	680-A-A
	28043875	255/55R20	XL	110V	7.0 - 9.0	8.0	31.0	10.4	680	11	35.5	2337	50	680-A-A
	28045726	265/50R20	XL	111V	7.5 - 9.5	8.5	30.5	10.8	690	11	36.8	2403	50	680-A-A



LT | SUV

ZIEX S/TZ05

ALL-SEASON PERFORMANCE AND COMFORT FOR LUXURY SUVs AND LIGHT TRUCKS



AVAILABLE TIRE SIZES	AVAILABLE RIM SIZING	SPEED RATING
15 SIZES	20" - 24"	H

LIMITED TREAD LIFE WARRANTY	RIDE GUARANTEE
50,000 MILES / 80,000 km	30 DAYS

POPULAR FITMENTS:

- CADILLAC ESCALADE
- CHEVROLET SUBURBAN
- CHEVROLET TAHOE
- DODGE DURANGO
- FORD EXPEDITION
- FORD EXPLORER
- GMC YUKON
- JEEP GRAND CHEROKEE
- LINCOLN NAVIGATOR
- TOYOTA SEQUOIA



PERFORMANCE RATINGS[†]



[†]Performance ratings are based on a scale of 1 to 5 with 5 being best. Ratings are in comparison to other Falken Tires products in the same category.

The ZIEX S/TZ05 features the latest in tread compound and construction technology designed specifically for SUV and 1/2 ton sport-truck applications. With an advanced M+S all-season non-directional tread design, the S/TZ05 allows rotation in all directions, optimizing tread life. With double taper-cut tread blocks and staggered shoulder lug grooves, the S/TZ05 is a smooth, quiet and dynamic tire. Available from 20 to 24-inch applications, this tire covers many of today's popular SUV and LT wheel fitments. Whether you're cruising through the city or driving on the open highway, the S/TZ05 provides unparalleled performance and comfort.

TIRE HIGHLIGHTS

-  **LONG TREAD LIFE**
Five-rib symmetric tread design provides increased high-speed stability and the freedom of tire rotation, enhancing tread life.
-  **SMOOTH HANDLING YEAR-ROUND**
Wide shoulder blocks increase tread stiffness allowing for maximum wet and dry handling and stability.
-  **HIGH-SPEED STABILITY**
Solid center rib offers excellent handling response especially in high-speed conditions.
-  **REDUCED TIRE NOISE**
Wide and narrow shoulder lug grooves designed to optimize noise reduction.



ROAD HAZARD PROTECTION
FREE replacement for up to two years or for the first 3/32nds of tread life.*



*Restrictions apply. Tire will be replaced free of charge. Mounting and balancing not included and you may be charged applicable taxes, the cost of valve stems, and disposal fees. Available in US and Canada only.

ZIEX S/TZ05

Wheel Dia.	Item Number	Tire Size	Load ID	Service Desc.	Approved Rim Width (in)	Measuring Rim (in)	Overall Diameter (in)	Overall Width (in)	Revolutions Per Mile	Tread Depth (/32in)	Tire Weight (lbs)	Max Load (lbs)	Max Pressure (psi cold)	U.T.Q.G.
20"	28051946	255/50R20	XL	109H	7.0 - 9.0	8.0	30.2	10.2	697	13	39.1	2271	50	460-A-A
	28051011	265/50R20	XL	111H	7.5 - 9.5	8.5	30.5	10.7	690	14	39.6	2403	50	460-A-A
	28051947	275/40R20	XL	106H	9.5 - 11.0	9.5	28.6	10.9	727	13	36.9	2094	50	460-A-A
	28051016	275/45R20	XL	110H	8.5 - 10.5	9.0	29.7	10.6	701	14	38.4	2337	50	460-A-A
	28051021	275/55R20	XL	117H	7.5 - 9.5	8.5	31.9	11.0	663	14	45.1	2833	50	460-A-A
	28051018	295/45R20	XL	114H	9.5 - 11.0	10.0	30.3	11.7	688	14	42.2	2601	50	460-A-A
	28051015	305/50R20	XL	120H	8.5 - 11.0	9.5	31.9	12.4	662	14	49.1	3086	50	460-A-A

Wheel Dia.	Item Number	Tire Size	Load ID	Service Desc.	Approved Rim Width (in)	Measuring Rim (in)	Overall Diameter (in)	Overall Width (in)	Revolutions Per Mile	Tread Depth (/32in)	Tire Weight (lbs)	Max Load (lbs)	Max Pressure (psi cold)	U.T.Q.G.
22"	28051218	265/35R22	XL	102H	9.0 - 10.5	9.5	29.5	10.5	701	13	36.7	1874	50	460-A-A
	28051217	265/40R22	XL	106H	9.0 - 10.5	9.5	30.3	10.6	683	13	36.6	2094	50	460-A-A
	28051216	285/40R22	XL	110H	9.5 - 11.0	10.0	31.0	11.4	670	14	42.2	2337	50	460-A-A
	28051219	285/45R22	XL	114H	9.0 - 10.5	9.5	32.1	11.0	648	14	42.9	2601	50	460-A-A
	28051220	305/40R22	XL	114H	10.0 - 12.0	11.0	31.6	12.3	658	14	45.2	2601	50	460-A-A
	28051215	305/45R22	XL	118H	9.5 - 11.5	10.0	32.7	12.0	637	14	47.8	2910	50	460-A-A
	24"	28051401	295/35R24	XL	110H	10.0 - 11.5	10.5	32.0	11.6	646	13	44.7	2337	50
28051402		305/35R24	XL	112H	10.0 - 12.0	11.0	32.4	12.0	639	13	45.1	2469	50	460-A-A



PCR

SINCERA SN250 A/S

LONG LASTING ALL-SEASON PERFORMANCE TOURING



AVAILABLE TIRE SIZES
63 SIZES

AVAILABLE RIM SIZING
14" - 18"

SPEED RATING
T / H / V

LIMITED TREAD LIFE WARRANTY
80,000 MILES (T) / 130,000 km (T)
75,000 MILES (H/V) / 120,000 km (H/V)

RIDE GUARANTEE
30 DAYS

POPULAR FITMENTS:

- FORD FOCUS
- FORD FUSION
- HONDA ACCORD
- HYUNDAI ELANTRA
- HYUNDAI SONATA
- NISSAN ALTIMA
- TOYOTA CAMRY
- TOYOTA PRIUS
- VOLKSWAGEN JETTA
- VOLKSWAGEN PASSAT



PERFORMANCE RATINGS†



†Performance ratings are based on a scale of 1 to 5 with 5 being best. Ratings are in comparison to other Falken Tires products in the same category.

TIRE HIGHLIGHTS

- YEAR-ROUND HANDLING**
3D Canyon Sipe Technology increases edges for enhanced ice braking and all-weather handling while the design's interlocking characteristics form a more solid tread block under load for excellent dry weather performance.
- LONGER TREAD LIFE**
Symmetrical rib design created to optimize even wear.
- ADDITIONAL GRIP IN LIGHT SNOW**
Angled tread grooves on every tread rib add void for packed snow.
- ALL-SEASON DRIVABILITY**
High sipe density for enhanced all-season drivability.



ROAD HAZARD PROTECTION

FREE replacement for up to two years or for the first 3/32nds of tread life.*



*Restrictions apply. Tire will be replaced free of charge. Mounting and balancing not included and you may be charged applicable taxes, the cost of valve stems, and disposal fees. Available in US and Canada only.

Specifically designed to provide class-leading durability, all-season performance and ride comfort, the new **SINCERA SN250 All-Season** truly delivers. Using Falken's proprietary Dynamic Range Technology (DRT), the SN250 A/S ensures maximum grip at a wider range of operating temperatures for exceptional dry and wet traction. Strategically placed tread blocks balance harmonics to reduce tire noise for an impressively quiet ride. Featuring an 80,000/75,000 mile Limited Tread Life Warranty, 63 sizes and covering a massive 91%† of non-luxury sub-compact through full-size vehicles, the SN250 A/S meets and exceeds all critical touring tire expectations and more.

† Market Coverage based on 3rd Party 2016 U.S. Vehicle Registration Data.

SINCERA SN250 A/S



PCR

SINCERA SN201 A/S

ALL-SEASON TOURING



AVAILABLE TIRE SIZES
20 SIZES

AVAILABLE RIM SIZING
14" - 18"

SPEED RATING
T / H

LIMITED TREAD LIFE WARRANTY
65,000 MILES / 105,000 km

RIDE GUARANTEE
30 DAYS

POPULAR FITMENTS:

- CHEVROLET MALIBU
- CHRYSLER 200
- FORD FOCUS
- HONDA ACCORD
- HONDA CIVIC
- HYUNDAI ELANTRA
- HYUNDAI SONATA
- NISSAN ALTIMA
- TOYOTA CAMRY
- TOYOTA COROLLA



PERFORMANCE RATINGS[†]



[†]Performance ratings are based on a scale of 1 to 5 with 5 being best. Ratings are in comparison to other Falken Tires products in the same category.

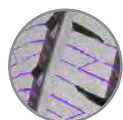
The Falken **SINCERA SN201 A/S** consistently provides all-season performance and comfort through an advanced manufacturing process, cutting-edge product features and quality construction. The tire is designed for compact and mid-size vehicles and delivers superb all-weather responsiveness and excellent durability at an exceptional value. The SN201 A/S is engineered to meet and exceed all critical touring tire expectations and is available in 14"-18" rim diameters. The SN201 A/S is offered in both T & H speed ratings with Falken's 65,000-mile Limited Tread Life Warranty and the Falken 30-Day Ride Guarantee.

TIRE HIGHLIGHTS



SMOOTH RIDE

Symmetrical rib design utilizes stiffer ribs to provide optimal handling stability and comfort while cross-rotation patterns fight irregular wear.



ALL-SEASON DRIVABILITY

High sipe density for enhanced all-season drivability.



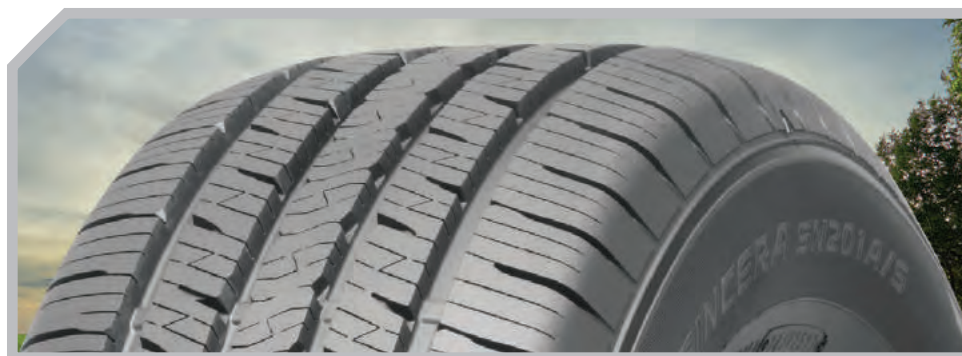
WET WEATHER SAFETY

Four circumferential grooves channel water away from the tread for consistent contact with the road surface.



ADDITIONAL GRIP IN LIGHT SNOW

Angled tread grooves on every tread rib add void for packed snow.



ROAD HAZARD PROTECTION

FREE replacement for up to two years or for the first 3/32nds of tread life.*



*Restrictions apply. Tire will be replaced free of charge. Mounting and balancing not included and you may be charged applicable taxes, the cost of valve stems, and disposal fees. Available in US and Canada only.

SINCERA SN201 A/S

Wheel Dia.	Item Number	Tire Size	Load ID	Service Desc.	Approved Rim Width (in)	Measuring Rim (in)	Overall Diameter (in)	Overall Width (in)	Revolutions Per Mile	Tread Depth (/32in)	Tire Weight (lbs)	Max Load (lbs)	Max Pressure (psi cold)	U.T.O.G.
14"	28629079	175/65R14	SL	82T	5.0 - 6.0	5.0	23.1	7.0	918	11	15.9	1047	51	620-A-B
	28629474	185/65R14	SL	86T	5.0 - 6.5	5.5	23.5	7.5	905	11	16.8	1168	51	620-A-B
	28622401	185/70R14	SL	88T	4.5 - 6.0	5.5	24.3	7.5	868	11	17.6	1235	51	620-A-B
	28625894	195/70R14	SL	91T	5.0 - 6.5	6.0	24.9	8.0	848	11	19.0	1356	51	620-A-B
15"	28625088	185/60R15	SL	84T	5.0 - 6.5	5.5	23.9	7.5	889	11	17.4	1102	51	620-A-B
	28622984	185/65R15	SL	88H	5.0 - 6.5	5.5	24.5	7.5	865	11	17.6	1235	51	620-A-A
	28623765	195/65R15	SL	91H	5.5 - 7.0	6.0	25.1	8.0	845	11	19.2	1356	51	620-A-A
	28622343	205/65R15	XL	99H	5.5 - 7.5	6.0	25.6	8.3	832	11	21.4	1709	50	620-A-A
	28624434	205/70R15	SL	96T	5.0 - 7.0	6.0	26.4	8.3	798	11	21.8	1565	51	620-A-B
	28626173	215/65R15	SL	96T	6.0 - 7.5	6.5	26.1	8.8	816	11	22.0	1565	51	620-A-B
	28622942	215/70R15	SL	98T	5.5 - 7.0	6.5	27.0	8.8	783	11	24.3	1653	51	620-A-B
	28624722	235/75R15	SL	105T	6.0 - 8.0	6.5	28.9	9.3	732	11	29.3	2039	51	620-A-B

Wheel Dia.	Item Number	Tire Size	Load ID	Service Desc.	Approved Rim Width (in)	Measuring Rim (in)	Overall Diameter (in)	Overall Width (in)	Revolutions Per Mile	Tread Depth (/32in)	Tire Weight (lbs)	Max Load (lbs)	Max Pressure (psi cold)	U.T.O.G.
16"	28621876	205/65R16	SL	95H	5.5 - 7.5	6.0	26.5	8.3	800	11	22.3	1521	51	620-A-A
	28629251	215/60R16	SL	95T	6.0 - 7.5	6.5	26.3	8.8	811	11	21.2	1521	51	620-A-B
	28629114	215/65R16	SL	98T	6.0 - 7.5	6.5	27.1	8.8	786	11	23.4	1653	51	620-A-B
	28624100	225/60R16	SL	98H	6.0 - 8.0	6.5	26.7	9.1	795	11	25.4	1653	51	620-A-A
	28625910	225/65R16	SL	100T	6.0 - 8.0	6.5	27.6	9.1	771	11	27.1	1764	51	620-A-B
	28629733	235/65R16	SL	103T	6.5 - 8.5	7.0	28.1	9.5	760	11	28.2	1929	51	620-A-B
17"	28628211	215/65R17	SL	99T	6.0 - 7.5	6.5	28.1	8.8	755	11	25.4	1709	51	620-A-B
18"	28629411	225/50R18	SL	95T	6.0 - 8.0	7.0	26.9	9.2	778	11	26.0	1521	51	620-A-B



PCR

SUV | CUV

WINTERPEAK F-ICE 1

STUDDABLE SAFETY IN ANY WINTER CONDITION



AVAILABLE TIRE SIZES
30 SIZES

AVAILABLE RIM SIZING
15" - 18"

SPEED RATING
T

POPULAR FITMENTS:

- HONDA ACCORD
- HONDA CIVIC
- MAZDA 3
- MAZDA CX-9
- SUBARU FORESTER
- SUBARU IMPREZA
- TOYOTA CAMRY
- TOYOTA RAV4
- TOYOTA SIENNA
- VOLKSWAGEN GOLF



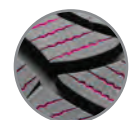
This tire is designed for severe snow conditions and meets the USTMA and TRAC snow traction performance requirements.

PERFORMANCE RATINGS[†]



[†]Performance ratings are based on a scale of 1 to 5 with 5 being best. Ratings are in comparison to other Falken Tires products in the same category.

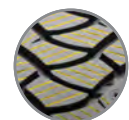
TIRE HIGHLIGHTS



BEST-IN-CLASS ICE BRAKING¹

High-sipe density provides more biting edges across the tread surface, resulting in category-leading ice braking performance.

¹Performance results are based on SRI standard testing procedures conducted Q1 2020. Individual results may vary depending on vehicle type, tire maintenance, driving style and road conditions.



EXCEPTIONAL TRACTION IN SNOW AND SLUSH

3D Canyon Sipe Technology allows for more sipes across the surface of the tire, delivering superior traction in a variety of winter conditions.



SUPERIOR GRIP IN THE COLD

Using 4D Nano Design technology, Falken engineered a tread compound that remains flexible in the coldest winter conditions, resulting in more grip than you'll get from an All-Season tire.



DESIGNED FOR THE COLDEST REGIONS

Featuring the industry's 3PMSF symbol along with legalized stud count and placement, the F-ICE 1 meets all necessary legal requirements for responsible winter driving.



ROAD HAZARD PROTECTION

FREE replacement for up to two years or for the first 3/32nds of tread life.*

*Restrictions apply. Tire will be replaced free of charge. Mounting and balancing not included and you may be charged applicable taxes, the cost of valve stems, and disposal fees. Available in US and Canada only.



SUPERIOR ICE BRAKING

The WINTERPEAK F-ICE 1 stops up to 8 feet shorter than leading competitors in recent ice braking comparison testing.

Performance results are based on SRI standard testing procedures conducted Q1 2020. Individual results may vary depending on vehicle type, tire maintenance, driving style and road conditions.



WINTERPEAK F-ICE 1

Product images are for illustrative purposes only. Tread design, technical information and tire construction subject to change without notice and may vary by size.

Wheel Dia.	Item Number	Tire Size	Load ID	Service Desc.	Recommended TSMI Stud Size	Approved Rim Width (in)	Measuring Rim (in)	Overall Diameter (in)	Overall Diameter (mm)	Overall Width (in)	Revolutions Per Mile	Tread Depth (/32in)	Tire Weight (lbs)	Max Load (lbs)	Max Pressure (psi cold)
15"	28384542	185/65R15	XL	92T	TSMI 12	5.0 - 6.5	5.5	24.4	621	7.4	865	11	21	1389	50
	28384551	195/60R15	XL	92T	TSMI 12	5.5 - 7.0	6.0	24.2	615	7.9	871	11	21	1389	50
	28384543	195/65R15	XL	95T	TSMI 12	5.5 - 7.0	6.0	25.0	635	7.9	845	11	22	1521	50
	28384544	205/65R15	SL	94T	TSMI 12	5.5 - 7.5	6.0	25.5	647	8.2	832	11	24	1477	44
16"	28384483	205/55R16	XL	94T	TSMI 12	5.5 - 7.5	6.5	25.0	634	8.4	845	11	23	1477	50
	28384652	205/60R16	XL	96T	TSMI 12	5.5 - 7.5	6.0	25.7	652	8.2	821	11	23	1565	50
	28384626	205/65R16	XL	99T	TSMI 12	5.5 - 7.5	6.0	26.5	672	8.2	800	11	25	1709	50
	28384662	215/55R16	XL	97T	TSMI 12	6.0 - 7.5	7.0	25.4	644	8.9	834	11	25	1609	50
	28384479	215/60R16	XL	99T	TSMI 12	6.0 - 7.5	6.5	26.1	664	8.7	811	11	27	1709	50
	28384681	215/65R16	XL	102T	TSMI 12	6.0 - 7.5	6.5	27.0	686	8.7	786	11	28	1874	50
	28384100	215/70R16	SL	100T	TSMI 13	5.5 - 7.0	6.5	27.9	708	8.7	755	11	30	1764	44
	28384480	225/60R16	SL	98T	TSMI 12	6.0 - 8.0	6.5	26.6	676	9.0	795	11	26	1653	44
	28384673	225/65R16	SL	100T	TSMI 12	6.0 - 8.0	6.5	27.5	698	9.0	771	11	29	1764	44
	28384629	235/65R16	SL	103T	TSMI 12	6.5 - 8.5	7.0	28.0	712	9.4	760	11	31	1929	44

Wheel Dia.	Item Number	Tire Size	Load ID	Service Desc.	Recommended TSMI Stud Size	Approved Rim Width (in)	Measuring Rim (in)	Overall Diameter (in)	Overall Diameter (mm)	Overall Width (in)	Revolutions Per Mile	Tread Depth (/32in)	Tire Weight (lbs)	Max Load (lbs)	Max Pressure (psi cold)
17"	28384792	215/45R17	XL	91T	TSMI 12	7.0 - 8.0	7.0	24.6	626	8.4	842	11	22	1356	50
	28384771	215/50R17	XL	95T	TSMI 12	6.0 - 7.5	7.0	25.5	648	8.7	823	11	24	1521	50
	28384727	215/55R17	XL	98T	TSMI 12	6.0 - 7.5	7.0	26.4	670	8.9	800	11	25	1653	50
	28384795	225/45R17	XL	94T	TSMI 12	7.0 - 8.5	7.5	25.0	634	8.9	834	11	24	1477	50
	28384772	225/50R17	XL	98T	TSMI 12	6.0 - 8.0	7.0	25.9	658	9.0	811	11	26	1653	50
	28384762	225/55R17	XL	101T	TSMI 12	6.0 - 8.0	7.0	26.9	682	9.2	788	11	27	1819	50
	28384728	225/60R17	XL	103T	TSMI 12	6.0 - 8.0	6.5	27.6	702	9.0	764	11	29	1929	50
	28384775	225/65R17	XL	106T	TSMI 12	6.0 - 8.0	6.5	28.5	724	9.0	742	11	31	2094	50
	28384725	235/55R17	XL	103T	TSMI 12	6.5 - 8.5	7.5	27.2	692	9.6	778	11	29	1929	50
	28384717	235/60R17	SL	102T	TSMI 12	6.5 - 8.5	7.0	28.1	714	9.4	753	11	30	1874	44
18"	28384790	235/65R17	XL	108T	TSMI 13	6.5 - 8.5	7.0	29.0	738	9.4	732	12	31	2205	50
	28384826	225/60R18	XL	104T	TSMI 12	6.0 - 8.0	6.5	28.6	727	9.0	736	11	30	1984	50
	28384895	235/45R18	XL	98T	TSMI 12	7.5 - 9.0	8.0	26.3	669	9.3	788	11	27	1653	50
	28384817	235/55R18	XL	104T	TSMI 12	6.5 - 8.5	7.5	28.2	717	9.6	749	11	31	1984	50
	28384816	235/60R18	XL	107T	TSMI 13	6.5 - 8.5	7.0	29.1	739	9.4	725	11	33	2149	50
28384811	245/60R18	SL	105T	TSMI 13	7.0 - 8.5	7.0	29.6	751	9.8	713	11	34	2039	44	

ESPIA EPZ II

CONFIDENT WINTER TRACTION



PCR

SUV | CUV



AVAILABLE TIRE SIZES
26 SIZES

AVAILABLE RIM SIZING
14" - 18"

SPEED RATING
T

POPULAR FITMENTS:

- AUDI A3
- CHEVROLET CRUZE
- FORD FUSION
- HONDA CIVIC
- HYUNDAI ELANTRA
- KIA SOUL
- NISSAN ALTIMA
- TOYOTA COROLLA
- TOYOTA PRIUS
- VOLKSWAGEN PASSAT



This tire is designed for severe snow conditions and meets the USTMA and TRAC snow traction performance requirements.

PERFORMANCE RATINGS[†]



†Performance ratings are based on a scale of 1 to 5 with 5 being best. Ratings are in comparison to other Falken Tires products in the same category.

The **ESPIA EPZ II** ensures driving confidence in the harshest winter conditions. Using the latest technology in tread design, compound and construction, the EPZ II is an excellent blend of winter performance and longer tread wear. The zigzag shape of the main groove is designed to provide resistance to hydroplaning while the tread notches create biting edges for traction on snow and ice. The ESPIA EPZ II is specifically designed for the most unforgiving winters.

TIRE HIGHLIGHTS



CONSISTENT CONTACT WITH THE ROAD

High-density sipes move water and snow away from the tread surface for continuous road connection with over 13,000 millimeters in edges added from its predecessor.



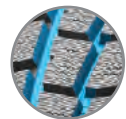
DEEP SNOW CAPABILITY

Wide lateral grooves work together with wide pockets built into the tire to allow more snow to pack into the tread, clearing the road surface quicker for increased snow traction in slushy or deep snow conditions.



COMFORTABLE RIDE

Strategically designed rib placement with larger outer-edge block-style ribs provide a comfortable and stable drive while maneuvering the vehicle, no matter the road-surface condition.



CONFIDENT GRIP IN THE RAIN

Wide circumferential grooves channel water away from the tread for consistent contact with the road surface, increasing wet traction and driver confidence.



ROAD HAZARD PROTECTION

FREE replacement for up to two years or for the first 3/32nds of tread life.*

*Restrictions apply. Tire will be replaced free of charge. Mounting and balancing not included and you may be charged applicable taxes, the cost of valve stems, and disposal fees. Available in US and Canada only.



ESPIA EPZ II

Product images are for illustrative purposes only. Tread design, technical information and tire construction subject to change without notice and may vary by size.

Wheel Dia.	Item Number	Tire Size	Load ID	Service Desc.	Approved Rim Width (in)	Measuring Rim (in)	Overall Diameter (in)	Overall Width (in)	Revolutions Per Mile	Tread Depth (/32in)	Tire Weight (lbs)	Max Load (lbs)	Max Pressure (psi cold)
14"	28314442	175/65R14	XL	86T	5.0 - 6.0	5.0	23.0	7.0	918	11	16	1168	50
	28314443	185/65R14	XL	90T	5.0 - 6.5	5.5	23.5	7.4	905	11	18	1323	50
15"	28314563	175/65R15	XL	88T	5.0 - 6.0	5.0	24.0	7.0	783	11	18	1235	50
	28314516	185/60R15	XL	88T	5.0 - 6.5	5.5	23.9	7.4	883	11	18	1235	50
	28314542	185/65R15	XL	92T	5.0 - 6.5	5.5	24.5	7.4	865	11	19	1389	50
	28314551	195/60R15	XL	92T	5.5 - 7.0	6.0	24.3	7.9	868	11	20	1389	50
	28314543	195/65R15	XL	95T	5.5 - 7.0	6.0	25.0	7.9	848	11	20	1521	50
	28314544	205/65R15	XL	99T	5.5 - 7.5	6.0	25.5	8.2	832	12	23	1709	50
	28314477	215/70R15	SL	98T	5.5 - 7.0	6.5	27.1	8.7	877	12	26	1653	44
	28314483	205/55R16	XL	94T	5.5 - 7.5	6.5	25.0	8.4	842	12	25	1477	50
16"	28314652	205/60R16	XL	96T	5.5 - 7.5	6.0	25.8	8.2	818	12	24	1565	50
	28314626	205/65R16	SL	95T	5.5 - 7.5	6.0	26.5	8.2	800	12	24	1521	44
	28317662	215/55R16	XL	97R	6.0 - 7.0	7.0	25.4	8.8	834	12	25	1609	50
	28314479	215/60R16	XL	99T	6.0 - 7.5	6.5	26.3	8.7	805	12	26	1709	50
	28314681	215/65R16	SL	98T	6.0 - 7.5	6.5	27.0	8.7	786	12	25	1653	44
	28314480	225/60R16	XL	102T	6.0 - 8.0	6.5	26.7	9.0	793	12	27	1874	50
	28314673	225/65R16	SL	100T	6.0 - 8.0	6.5	27.5	9.0	771	12	28	1764	44

Wheel Dia.	Item Number	Tire Size	Load ID	Service Desc.	Approved Rim Width (in)	Measuring Rim (in)	Overall Diameter (in)	Overall Width (in)	Revolutions Per Mile	Tread Depth (/32in)	Tire Weight (lbs)	Max Load (lbs)	Max Pressure (psi cold)
17"	28317771	215/50R17	XL	95R	6.0 - 8.0	7.0	25.7	8.6	823	12	24	1521	50
	28314727	215/55R17	XL	98T	6.0 - 7.5	7.0	26.5	8.9	798	12	25	1653	50
	28314795	225/45R17	XL	94T	7.0 - 8.5	7.5	25.2	8.9	826	12	25	1477	50
	28314772	225/50R17	XL	98T	6.0 - 8.0	7.0	26.1	9.2	808	12	26	1653	50
	28314762	225/55R17	XL	101T	6.0 - 8.0	7.0	26.9	9.2	783	12	27	1819	50
	28314725	235/55R17	SL	99T	6.5 - 8.5	7.5	27.3	9.6	778	12	28	1709	44
18"	28314892	225/40R18	XL	92T	7.5 - 9.0	8.0	25.1	9.1	826	12	24	1389	50
	28314824	225/45R18	XL	95T	7.0 - 8.5	7.5	26.1	8.9	803	12	26	1521	50
	28314825	235/50R18	XL	101T	6.5 - 8.5	7.5	27.5	9.6	769	12	29	1819	50



ESPIA EPZ II SUV

CONFIDENT WINTER PERFORMANCE DESIGNED FOR SUVs

AVAILABLE TIRE SIZES
15 SIZES

AVAILABLE RIM SIZING
16" - 20"

SPEED RATING
R

POPULAR FITMENTS:

- ACURA MDX
- CHEVROLET EQUINOX
- CHEVROLET TAHOE
- FORD ESCAPE
- HONDA PILOT
- JEEP GRAND CHEROKEE
- JEEP PATRIOT
- KIA SORENTO
- LEXUS RX
- SUBARU FORESTER



This tire is designed for severe snow conditions and meets the USTMA and TRAC snow traction performance requirements.

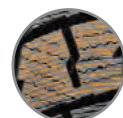
PERFORMANCE RATINGS[†]



[†]Performance ratings are based on a scale of 1 to 5 with 5 being best. Ratings are in comparison to other Falken Tires products in the same category.

The **ESPIA EPZ II SUV** ensures driving confidence in the harshest winter conditions. Using the latest technology in tread design, compound and construction, the EPZ II SUV is an excellent blend of winter performance and handling. The directional tread design coupled with wide circumferential grooves significantly enhance hydroplane resistance for superb wet handling, while the tread surface etching delivers exceptional traction in icy conditions. The ESPIA EPZ II SUV is specifically designed for the most unforgiving winters.

TIRE HIGHLIGHTS



EXCELLENT ICE TRACTION

Tread surface etching provides slip resistant contact for excellent ice traction and braking performance during severe winter conditions.



CONSISTENT CONTACT WITH THE ROAD

High density sipes move water and snow away from the tread surface creating biting edges for continuous road connection.



WET WEATHER PERFORMANCE

Built for wet weather performance, the directional tread design improves hydroplane resistance by quickly dispersing water.



CONFIDENT GRIP IN THE RAIN

Wide circumferential grooves channel water away from the tread for consistent contact with the road surface, increasing wet traction and driver confidence.



ROAD HAZARD PROTECTION

FREE replacement for up to two years or for the first 3/32nds of tread life.*

*Restrictions apply. Tire will be replaced free of charge. Mounting and balancing not included and you may be charged applicable taxes, the cost of valve stems, and disposal fees. Available in US and Canada only.



ESPIA EPZ II SUV

Wheel Dia.	Item Number	Tire Size	Load ID	Service Desc.	Approved Rim Width (in)	Measuring Rim (in)	Overall Diameter (in)	Overall Width (in)	Revolutions Per Mile	Tread Depth (/32in)	Tire Weight (lbs)	Max Load (lbs)	Max Pressure (psi cold)
16"	28409969	215/70R16	SL	100R	5.5 - 7.0	6.5	27.8	8.7	757	14	29	1764	44
17"	28404905	215/65R17	SL	99R	6.0 - 7.5	6.5	28.2	8.6	751	14	27	1709	44
	28407747	225/60R17	SL	99R	6.0 - 8.0	6.5	27.7	8.6	761	14	31	1709	44
	28409020	225/65R17	SL	102R	6.0 - 8.0	6.5	28.5	8.9	744	14	31	1874	44
	28402960	235/60R17	SL	102R	6.5 - 8.5	7.0	28.1	9.3	751	14	34	1874	44
	28408092	235/65R17	XL	108R	6.5 - 8.5	7.0	29.2	9.3	729	14	35	2205	50
	28401905	265/70R17	SL	115R	7.0 - 9.0	8.0	31.5	10.9	672	14	43	2679	44

Wheel Dia.	Item Number	Tire Size	Load ID	Service Desc.	Approved Rim Width (in)	Measuring Rim (in)	Overall Diameter (in)	Overall Width (in)	Revolutions Per Mile	Tread Depth (/32in)	Tire Weight (lbs)	Max Load (lbs)	Max Pressure (psi cold)
18"	28401235	225/60R18	SL	100R	6.0 - 8.0	6.5	28.6	8.8	738	14	31	1764	44
	28401449	235/55R18	SL	100R	6.5 - 8.5	7.5	28.2	9.6	747	14	32	1764	44
	28403995	235/60R18	XL	107R	6.5 - 8.5	7.0	29.2	9.2	725	14	35	2149	50
	28317815	235/65R18	SL	106R	6.5 - 8.5	7.0	30.1	9.6	703	14	35	2094	44
	28314811	245/60R18	SL	105T	7.0 - 8.5	7.0	29.6	9.9	716	14	36	2039	44
	28405731	255/55R18	XL	109R	7.0 - 9.0	8.0	29.1	10.2	728	14	41	2271	50
19"	28317970	235/55R19	XL	105R	6.5 - 8.5	7.5	29.2	9.7	720	14	34	2039	50
20"	28404196	275/55R20	SL	113R	7.5 - 9.5	8.5	32.0	11.1	661	14	46	2535	44

EUROWINTER HS449

DEPENDABLE WINTER PERFORMANCE



PCR

SUV | CUV



AVAILABLE TIRE SIZES
61 SIZES

AVAILABLE RIM SIZING
13" - 20"

SPEED RATING
T / H / V

POPULAR FITMENTS:

- AUDI A4 QUATTRO
- BMW 320i XDRIVE
- CHEVROLET MALIBU
- FORD FLEX
- HONDA CROSSTOUR
- HYUNDAI VELOSTER
- INFINITI Q50
- KIA OPTIMA
- MAZDA 6
- SUBARU IMPREZA WRX



PERFORMANCE RATINGS[†]



[†]Performance ratings are based on a scale of 1 to 5 with 5 being best. Ratings are in comparison to other Falken Tires products in the same category.

The **EUROWINTER HS449** raises the bar for the winter performance segment. With a new silica enriched compound, the HS449 is a blend of winter capability and dry performance. The directional tread design features an optimal amount of void ratio for grip in wet and slushy conditions as well as snow evacuation. 3D Canyon Siping is utilized in the tread for ice grip and wet performance to help the tire maintain contact with the road in severe conditions. For those looking for performance in winter with dependability in the dry, the HS449 hits the mark.

TIRE HIGHLIGHTS



CONSISTENT WINTER PERFORMANCE

Silica-enriched compound is utilized to help maintain tire flexibility in cold weather which allows for consistent winter performance.



ICE BRAKING CAPABILITY

3D Canyon Sipe Technology increases ice braking, and enhances snow, wet and dry handling by allowing more edges per tread block, yet still provides individual block rigidity by working together to support each other, suppressing block flex.



WINTER DRIVING CONFIDENCE

High-void directional tread design features multiple wide lateral grooves in the tread design which help to maintain contact with the road in winter conditions, providing confidence for winter driving.



QUIET RIDE

Staggered block variation breaks up tire pattern noise and leads to a quiet ride inside your vehicle.



ROAD HAZARD PROTECTION

FREE replacement for up to two years or for the first 3/32nds of tread life.*

*Restrictions apply. Tire will be replaced free of charge. Mounting and balancing not included and you may be charged applicable taxes, the cost of valve stems, and disposal fees. Available in US and Canada only.



EUROWINTER HS449



FALKEN
TIRES

falkentire.com | 800.723.2553

© 2021 Sumitomo Rubber North America, Inc. All Rights Reserved.

9087-0121